

Catalogo raccorderia e componenti inox

Fittings and stainless steel components price list

Passione e competenza nella lavorazione dell'acciaio inox da oltre 30 anni.

30 years of passion and expertise in the stainless steel industry

REV. 7 GENNAIO 2020

Riproduzione vietata. Tutti i diritti sono riservati. È vietata la copia, la riproduzione e la pubblicazione del seguente documento senza l'autorizzazione scritta di
VLS COMPONENTS



Tutti i processi produttivi di VLS Components sono certificati secondo il sistema UNI EN 9001:2000 VISION.
The production process by VLS Components is certified according to UNI EN 9001:2000 VISION system.

Indice

06	Raccorderia GAS / BSP fittings
13	Raccorderia garolla / Garolla fittings
18	Raccorderia microfusa / Microcast fittings
22	Reggitubo in acciaio / Steek pipe clamps
23	Piastre refrigeranti / Heat exchange plates
24	Valvole / Valves
27	Raccorderia clamp / Clamp fittings
30	Raccorderia a saldare / Welding fittings
35	Raccorderia enologica / Oenological fittings
36	Raccorderia macon / Macon fittings
37	Raccorderia DIN / DIN fittings
41	Flange / Flanges
44	Curve / Bends
46	Accessori enologici / Oenological accessories

VLS Components: Steel Passion



**Attenzione alla
qualità e costante
aggiornamento
tecnologico:
i valori di
VLS Components.**

VLS Components è attiva da oltre 30 anni nel settore della lavorazione dell'acciaio inox. Nasce dallo spirito imprenditoriale del suo fondatore Giovanni Velo con l'obiettivo di progettare, sperimentare e proporre nuovi prodotti per il mondo dell'enologia e per il settore alimentare in genere.

Negli anni l'azienda cresce in dimensioni ed aumenta in maniera significativa la rete di distribuzione commerciale. Costante rimane l'attenzione alla qualità del prodotto che, benché realizzato in serie, si contraddistingue per la presenza di particolari eseguiti su misura e su specifiche del cliente con metodi e tecnologie all'avanguardia.

VLS Components has over 30 years experience in the stainless steel industry. It was born from the entrepreneurial spirit of its founder Mr Giovanni Velo, with the aim to design, test and propose new products for the winemaking and agro-food sectors in general. Over the years the company made a name for itself thanks to its growth as a company and in the market. Both the company and its sales distribution network have seen considerable growth. Attention to product quality has always remained a constant at VLS Components, and despite the large scale production methods, its products have always stood out for the customised work made to meet specific client requirements using state of the art technologies and methods.

Giovanni e Jacopo Velo

Giovanni e Jacopo Velo

STEEL PRODUCTION

Tutta la nostra produzione è realizzata interamente in acciaio inox AISI 304 e AISI 316 ed è ricavata da materiale laminato o forgiato a caldo. VLS Components garantisce sempre la qualità della propria produzione acquistando materiale di prima scelta con certificati di qualità ed effettuando durante le fasi di lavorazione controlli completi ed efficaci.

All our production is entirely made of AISI 304 and AISI 316 stainless steel and comes from plate or hot forged materials. VLS Components always guarantees the quality of its production and buys quality-certified, carefully selected materials while performing full, effective testing during the production phase.

STEEL TECHNOLOGY

L'azienda sviluppa una produzione avanzata di raccorderia in acciaio inox, con tecnologia CAD CAM e certificazione sistema qualità ISO 9001 2000: VISION. La gamma dei prodotti offre tutte le tipologie di raccordi per l'impiantistica enologica, agroalimentare, lattiero casearia e chimico farmaceutica; acciaio inox AISI 304 e 316 garantito da certificati di qualità e adozione ISO nel processo produttivo.

The company has developed an advanced production line of stainless steel fittings, employing CAD CAM technology and is ISO 9001:2000 VISION certified. The products range offers all types of fittings for winemaking, agro-food, milk, cheese and chemical/ pharmaceutical production plants. It uses AISI 304 and AISI 316 stainless steel guaranteed by quality certificates and an ISO-backed production process.

Timeline

1985

Forte di 25 anni di esperienza nel mondo delle forniture tecniche per il settore enologico e alimentare, Giovanni Velo fonda Velo Acciai S.r.l.

With 25 years of experience in the world of technical components for the winemaking & food industry, Giovanni Velo founded Velo Acciai S.r.l.

90's

L'azienda inizia la sua espansione commerciale all'estero, sia in Europa che in paesi extraeuropei.

The company started his commercial expansion abroad, both in Europe and in countries outside Europe.

2002

La seconda generazione, rappresentata da Jacopo e Tommaso Velo, entra in azienda.

The second generation, represented by Jacopo and Tommaso Velo, joins the company.

2015

Forte del successo delle soluzioni proposte, VLS Components sostiene importanti investimenti in tecnologie, come il magazzino automatico Modula, e in risorse umane.

Following the success of the solutions proposed, VLS Components supports major investments in technology, as the automatic warehousing system Modula, and in human resources.

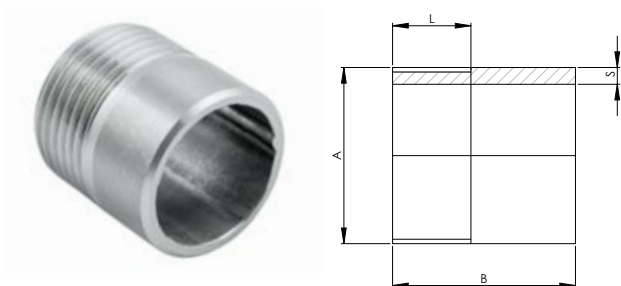
BSP fittings

Raccorderia GAS

La raccorderia filettata GAS proposta da VLS Components è interamente ricavata da tubo o da pieno e prodotta anche su specifiche misure a disegno. Offriamo una gamma completa di raccorderia con filetto Gas: tronchetti, manicotti, nipples, tappi, gomiti, dadi, riduzioni e tee. La raccorderia filettata Gas ha un range di misure da 1/8" a 4" (tubo da 10 a 114 mm). Sono prodotti sia in acciaio inox AISI 304 che AISI 316.

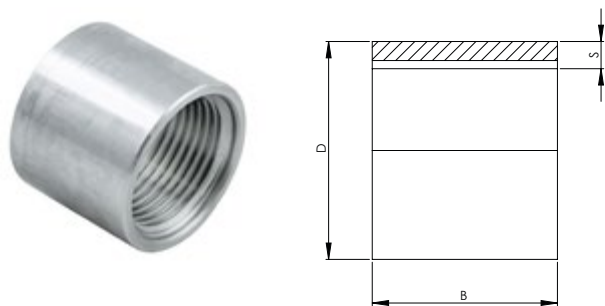
BSP threaded fittings by VLS Components are entirely forged from a single block or from a pipe and can also be produced according to requested sizes on technical drawings. We offer a complete range of connections with BSP thread: welding nipples, sockets, nipples, plugs and caps, elbows, nuts, reducers and tees. Our BSP threaded fittings' size ranges from 1/8" to 4" (pipe from 10 to 114 mm). They are produced both in AISI 304 and AISI 316 stainless steel.

art. 100
TRONCHETTO
Welding nipple



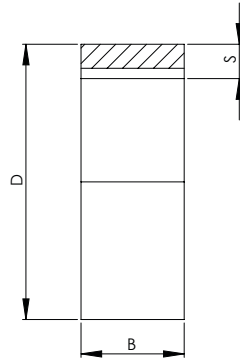
CODICE / CODE	FILETTO GAS / BSP	A	S	L	B
100-18	1/8"	10	1,5	9	17
100-14	1/4"	13,7	1,5	12	18
100-38	3/8"	17,2	2	12	22
100-12	1/2"	21,3	2,5	16	30
100-34	3/4"	26,9	3	16	30
100-100	1"	33,7	3,2	18	35
100-114	1 1/4"	42,4	3,6	20	40
100-112	1 1/2"	48,3	3,6	20	40
100-200	2"	60,3	3,6	23	45
100-212	2 1/2"	76,1	4	23	45
100-300	3"	88,9	4	23	45
100-400	4"	114,3	4	31	60

art. 110
MANICOTTO
Socket



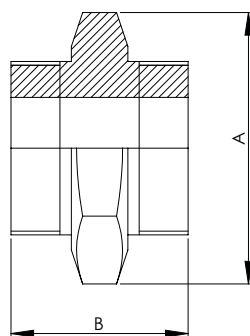
CODICE / CODE	FILETTO GAS / BSP	D	S	B
110-18	1/8"	14	2,5	18
110-14	1/4"	18	3	18
110-38	3/8"	22	4	20
110-12	1/2"	28	4	26
110-34	3/4"	32	4	30
110-100	1"	40	5	34
110-114	1 1/4"	50	6	40
110-112	1 1/2"	55	6	42
110-200	2"	70	7	43
110-212	2 1/2"	89	8	45
110-300	3"	99	8	45
110-400	4"	131,5	10	60

art. 115
MEZZO MANICOTTO
Half socket



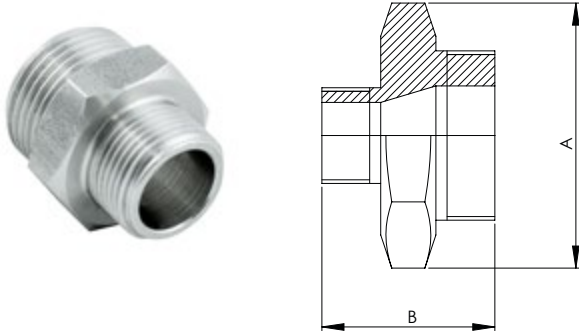
CODICE / CODE	FILETTO GAS / BSP	D	S	B
115-18/10	1/8"	22	2,3	10
115-14/10	1/4"	28	3	10
115-14/12	1/4"	28	3	12
115-38/12	3/8"	22	4	12
115-12/13	1/2"	28	4	13
115-12/16	1/2"	28	4	16
115-12/20	1/2"	28	4	20
115-34/15	3/4"	32	4	15
115-34/20	3/4"	32	4	20
115-100/15	1"	40	5	15
115-100/20	1"	40	5	20
115-100/30	1"	40	5	30
115-114/20	1 1/4"	50	6	20
115-114/23	1 1/4"	50	6	23
115-114/25	1 1/4"	50	6	25
115-112/20	1 1/2"	55	6	20
115-112/23	1 1/2"	55	6	23
115-200/23	2"	70	7	23
115-200/30	2"	70	7	30
115-212/30	2 1/2"	89	8	30

art. 120
NIPPLE ESAGONALE
Hexagon nipple



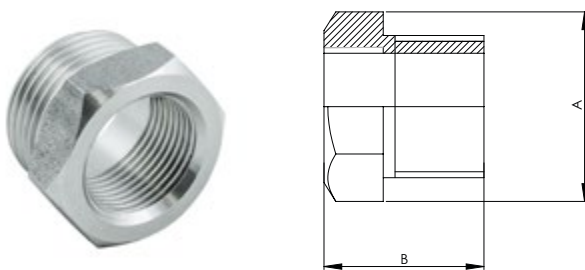
CODICE / CODE	FILETTO GAS / BSP	A (CHIAVE)	B
120-18	1/8"	14	28
120-14	1/4"	14	28
120-38	3/8"	19	30
120-12	1/2"	22	35
120-34	3/4"	27	39
120-100	1"	36	42
120-114	1-1/4"	46	45
120-112	1-1/2"	50	54
120.200	2"	65	56

art. 125
NIPPLE ESAGONALE RIDOTTO
Reducing hexagon nipple



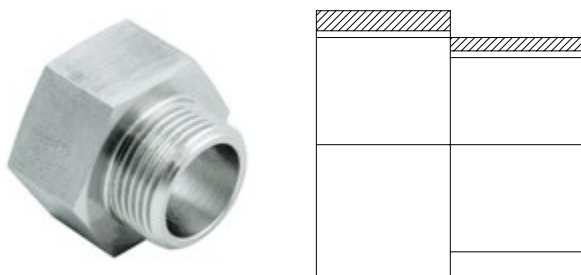
CODICE / CODE	FILETTO GAS / BSP	A (CHIAVE)	B
125-14/18	1/4"-1/8"	14	28
125-38/14	3/8"-1/4"	19	30
125-12/38	1/2"-3/8"	22	35
125-34/12	3/4"-1/2"	27	39
125-100/34	1"-3/4"	36	42
125-114/100	1 1/4"-1"	46	45
125-112/114	1 1/2"-1 1/4"	50	54
125-200/112	2"-1 1/2"	65	56

art. 130
RIDUZIONE MAS/FEM
Male/female reducing bush



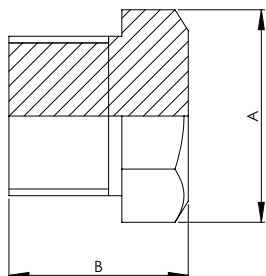
CODICE / CODE	FILETTO GAS / BSP	A (CHIAVE)	B
130-14/18	1/4"-1/8"	14	18
130-38/14	3/8"-1/4"	17	20
130-12/38	1/2"-3/8"	22	23
130-34/12	3/4"-1/2"	27	24
130-100/34	1"-3/4"	36	27
130-114/100	1 1/4"-1"	46	29
130-112/114	1 1/2"-1 1/4"	50	30
130-200/112	2"-1 1/2"	65	32

art. 131
RIDUZIONE ESAGONALE FEM/MAS
Exagonal female/male reducing bush



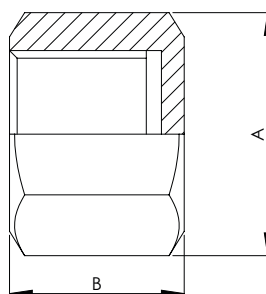
CODICE / CODE	FILETTO GAS / BSP
131-38/14	3/8"-1/4"
131-12/38	1/2"-3/8"
131-34/12	3/4"-1/2"
131-100/34	1"-3/4"
131-114/100	1 1/4"-1"
131-112/114	1 1/2"-1 1/4"
131-200/112	2"-1 1/2"
131-212/200	2 1/2"-2"

art. 140
TAPPO MASCHIO
Hexagon head plug



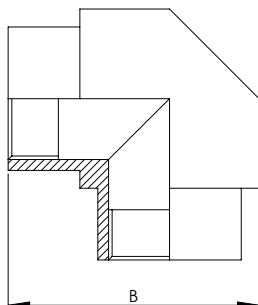
CODICE / CODE	FILETTO GAS / BSP
140-18	1/8"
140-14	1/4"
140-38	3/8"
140-12	1/2"
140-34	3/4"
140-100	1"
140-114	1-1/4"
140-112	1-1/2"
140-200	2"

art. 145
TAPPO FEMMINA
Hexagon cap



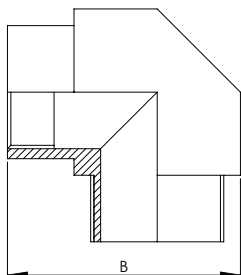
CODICE / CODE	FILETTO GAS / BSP	A (CHIAVE)	B
145-18	1/8"	14	13
145-14	1/4"	17	13
145-38	3/8"	22	14
145-12	1/2"	27	16
145-34	3/4"	30	19
145-100	1"	36	23
145-114	1-1/4"	50	24
145-112	1-1/2"	55	26
145-200	2"	65	27

art. 150
GOMITO 90° F/F FILETTATO
Female 90° elbow



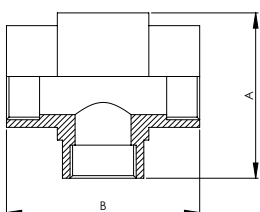
CODICE / CODE	FILETTO GAS / BSP	B
150-14	1/4"	30
150-38	3/8"	35
150-12	1/2"	40
150-34	3/4"	50
150-100	1"	60
150-114	1-1/4"	70
150-112	1-1/2"	80

art. 155
GOMITO 90° MAS/FEM
Male/female 90° elbow



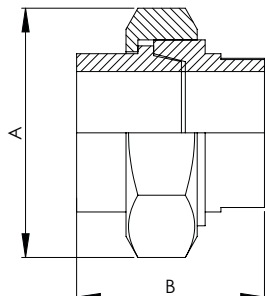
CODICE / CODE	FILETTO GAS / BSP	B
155-14	1/4"	30
155-38	3/8"	35
155-12	1/2"	40
155-34	3/4"	50
155-100	1"	60

art. 160
TEE FILETTATO FEM/FEM/FEM
Equal tee



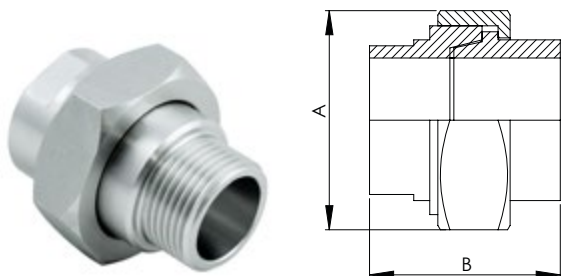
CODICE / CODE	FILETTO GAS / BSP	B	A
160-14	1/4"	40	30
160-38	3/8"	45	35
160-12	1/2"	50	40
160-34	3/4"	65	50
160-100	1"	76	60
160-114	1-1/4"	90	80
160-112	1-1/2"	100	80

art. 170
BOCCHETTONE CONICO FEM/FEM
Conical union



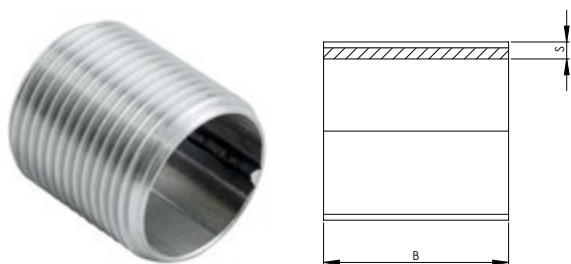
CODICE / CODE	FILETTO GAS / BSP	A (CHIAVE)	B
170-14	1/4"	32	40
170-38	3/8"	36	42
170-12	1/2"	46	44
170-34	3/4"	50	47
170-100	1"	55	52
170-114	1-1/4"	65	54
170-112	1-1/2"	72	58
170-200	2"	82	64

art. 175
BOCCHETTONE CONICO MAS/FEM
Male/female conical union



CODICE / CODE	FILETTO GAS / BSP	A (CHIAVE)	B
175-14	1/4"	32	40
175-38	3/8"	36	42
175-12	1/2"	46	44
175-34	3/4"	50	47
175-100	1"	55	52
175-114	1-1/4"	65	54
175-112	1-1/2"	72	58
175-200	2"	82	64

art. 180
NIPPLE SEMPLICE
Nipple



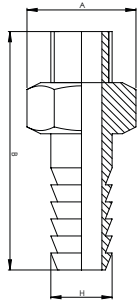
CODICE / CODE	FILETTO GAS / BSP	S	B
180-18	1/8"	1,5	17
180-14	1/4"	1,5	18
180-38	3/8"	2	20
180-12	1/2"	2,5	25
180-34	3/4"	3	30
180-100	1"	3,2	35
180-114	1 1/4"	3,6	40
180-112	1 1/2"	3,6	40
180-200	2"	3,6	45

art. 185
CONTRODADO ESAGONALE
Hexagonal nut



CODICE / CODE	FILETTO GAS / BSP	A (CHIAVE)	L
185-18	1/8"	14	5
185-14	1/4"	17	6
185-38	3/8"	22	7
185-12	1/2"	24	6
185-34	3/4"	32	6
185-100	1"	36	8
185-114	1-1/4"	50	8
185-112	1-1/2"	55	8
185-200	2"	65	8

art. 190
PORTAGOMMA MASCHIO
Hose nipple



CODICE / CODE	FILETTO GAS / BSP	A (CHIAVE)	B	H
190-18	1/8"	14	39	10,5
190-14	1/4"	17	41	13
190-38	3/8"	19	46	15
190-12	1/2"	24	49	20
190-34	3/4"	30	52	25
190-100	1"	36	58	30
190-114	1-1/4"	46	70	40
190-112	1-1/2"	55	80	48
190.200	2"	65	85	60

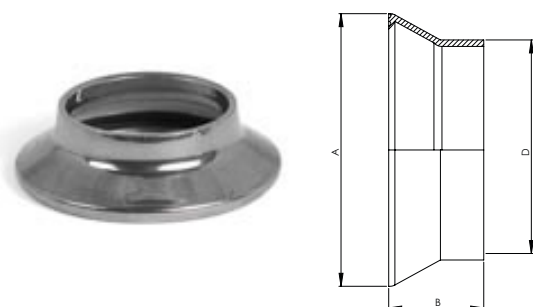
Garolla fittings

Raccorderia garolla

I raccordi garolla proposti da VLS Components sono composti da morsetti, tappi, riduzioni coniche ed economiche, guarnizioni, portagomma, curve e tee con raccordi garolla. Sono realizzati in acciaio inox AISI 304 nelle misure da DN 40 a DN 120.

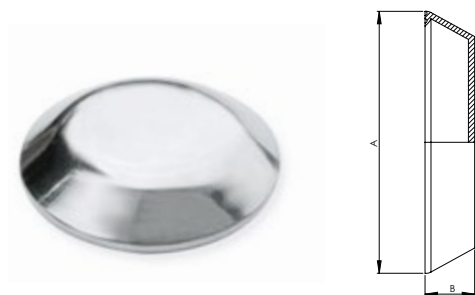
Garolla fittings by VLS Components include clamps, plugs and caps, conical and economical reducers, gaskets, hose nipples, tees and bends with Garolla fittings. They are produced in stainless steel AISI304 and measure from DN40 to DN120.

art. 300
SEMIRACCORDO GAROLLA
Long welding garolla fitting



CODICE / CODE	DN	D	A	B
300-40	40	42,4	68	22
300-50	50	50	76	22
300-60	60	60	86	23
300-70	70	70	96	25
300-80	80	82	108	29
300-100	100	101,6	128	33
300-120	120	122	155	33

art. 310
TAPPO GAROLLA
Garolla cap

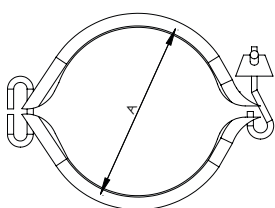


CODICE / CODE	DN	A	B
310-40	40	68	14
310-50	50	76	14
310-60	60	86	15
310-70	70	96	15
310-80	80	108	20
310-100	100	128	24
310-120	120	155	25

art. 320
MORSETTO GAROLLA
Garolla clamp for connectors



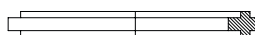
CODICE / CODE	DN
320-40	40
320-50	50
320-60	60
320-70	70
320-80	80
320-100	100
320-120	120



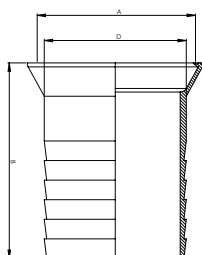
art. 330
GUARNIZIONE GAROLLA
Garolla sealing ring



CODICE / CODE	DN
9-330-40	40
9-330-50	50
9-330-60	60
9-330-70	70
9-330-80	80
9-330-100	100
9-330-120	120

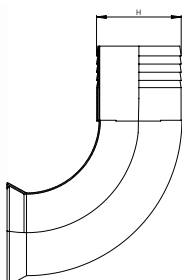


art. 340
PORTAGOMMA GAROLLA
Garolla hose holder



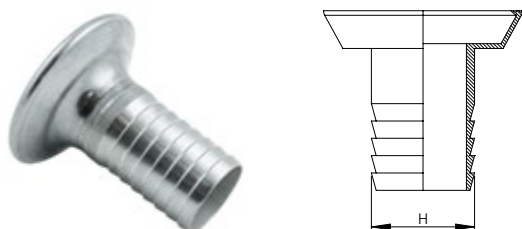
CODICE / CODE	DN	D	A	B
340-40	40	41	68	65
340-50	50	51	76	87
340-60	60	61,5	86	89
340-70	70	70	96	95
340-80	80	81,5	108	115
340-100	100	101	128	140
340-120	120	121,5	155	140

art. 530
CURVA PORTAGOMMA CON SEMIRACCORDO GAROLLA
Garolla bend with rubber hose fitting



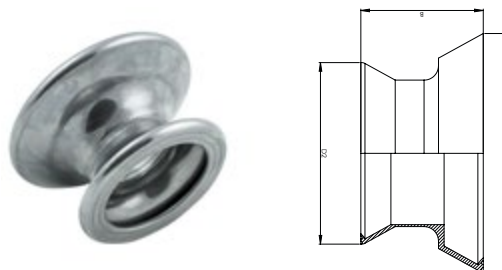
CODICE / CODE	DN	PORTAGOMMA / HOSE HOLDER
530-40	40	41
530-50	50	51
530-60	60	61,5
530-70	70	70
530-80	80	81,5
530-100	100	101
530-120	120	121,5

art. 345
PORTAGOMMA GAROLLA RIDOTTI (DN)
Garolla hose holder for reduction (DN)



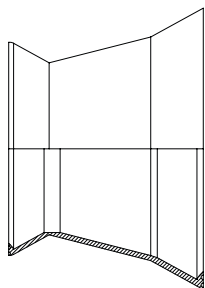
CODICE / CODE	DN	PORTAGOMMA / HOSE HOLDER	H
345-40/20	40	20	21
345-40/25	40	25	26,5
345-40/30	40	30	31,5
345-50/20	50	20	21
345-50/25	50	25	26,5
345-50/30	50	30	31,5
345-50/40	50	40	41
345-60/25	60	25	26,5
345-60/30	60	30	31,5
345-60/40	60	40	41
345-60/50	60	50	51
345-70/25	70	25	26,5
345-70/30	70	30	31,5
345-70/40	70	40	41
345-70/50	70	50	51
345-70/60	70	60	61,5
345-80/25	80	25	26,5
345-80/30	80	30	31,5
345-80/40	80	40	41
345-80/50	80	50	51
345-80/60	80	60	61,5
345-80/70	80	70	70
345-100/50	100	50	51
345-100/60	100	60	61,5
345-100/70	100	70	70
345-100/80	100	80	81,5
345-120/60	120	60	61,5
345-120/70	120	70	70
345-120/80	120	80	81,5
345-120/100	120	100	101

art. 350
RIDUZIONE ECONOMICA GAROLLA
Garolla reduction



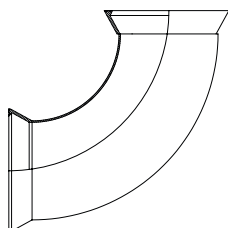
CODICE / CODE	DN	PORTAGOMMA / HOSE HOLDER
350-50/40	50	40
350-60/40	60	40
350-60/50	60	50
350-70/40	70	40
350-70/50	70	50
350-70/60	70	60
350-80/40	80	40
350-80/50	80	50
350-80/60	80	60
350-80/70	80	70
350-100/50	100	50
350-100/60	100	60
350-100/70	100	70
350-100/80	100	80
350-120/60	120	60
350-120/70	120	70
350-120/80	120	80
350-120/100	120	100

art. 360
RIDUZIONE CONICA GAROLLA
Conical garolla reduction



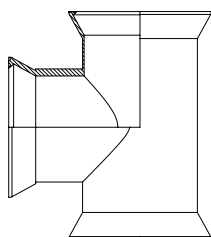
CODICE / CODE	DN1°	DN 2°
360-50/40	50	40
360-60/40	60	40
360-60/50	60	50
360-70/40	70	40
360-70/50	70	50
360-70/60	70	60
360-80/40	80	40
360-80/50	80	50
360-80/60	80	60
360-80/70	80	70
360-100/50	100	50
360-100/60	100	60
360-100/70	100	70
360-100/80	100	80
360-120/50	120	50
360-120/70	120	60
360-120/60	120	70
360-120/80	120	80
360-120/100	120	100

art. 520
CURVA CON SEMIRACCORDO GAROLLA
Garolla bend



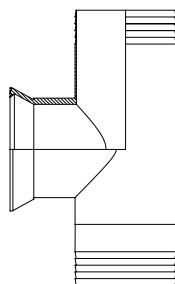
CODICE / CODE	DN	A	B
520-40	40	65	76
520-50	50	75	91
520-60	60	87	92
520-70	70	98	108
520-80	80	108	136
520-100	100	128	166
520-120	120	158	205

art. 630
TEE CON SEMIRACCORDO GAROLLA
Tee shaped garolla fitting



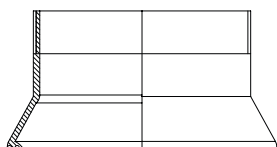
CODICE / CODE	DN	A	B	C
630-40	40	124	65	62
630-50	50	146	75	73
630-60	60	162	87	81
630-70	70	172	98	86
630-80	80	192	108	96
630-100	100	224	128	112
630-120	120	280	158	140

art. 635
TEE PORTAGOMMA CON
SEMIRACCORO GAROLLA
Garolla tee with rubber hose
fitting



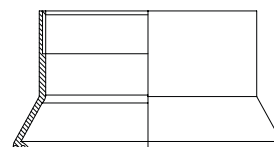
CODICE / CODE	DN
635-40	40
635-50	50
635-60	60
635-70	70
635-80	80
635-100	100
635-120	120

art. 370
SEMIRACCORDO GAROLLA MASCHIO GAS
Garolla fitting + welding nipple



CODICE / CODE	DN	FILETTO GAS / BSP
370-40/100	40	1"
370-40/112	40	1 1/2"
370-40/114	40	1 1/4"
370-40/12	40	1/2"
370-40/14	40	1/4"
370-40/200	40	2"
370-40/34	40	3/4"
370-50/100	50	1"
370-50/112	50	1 1/2"
370-50/114	50	1 1/4"
370-50/200	50	2"
370-50/34	50	3/4"
370-60/100	60	1"
370-60/112	60	1 1/2"
370-60/114	60	1 1/4"
370-60/200	60	2"
370-60/212	60	2 1/2"
370-70/200	70	2"
370-70/212	70	2 1/2"
370-70/300	70	3"
370-80/200	80	2"
370-80/212	80	2 1/2"
370-80/300	80	3"
370-100/100	100	1"
370-100/300	100	3"
370-100/400	100	4"
370-120/100	100	1"
370-120/114	120	1 1/4"
370-120/400	120	4"

art. 380
SEMIRACCORDO GAROLLA FEMMINA GAS
Garolla fitting + socket



CODICE / CODE	DN	FILETTO GAS / BSP
380-40/100	40	1"
380-40/112	40	1 1/2"
380-40/114	40	1 1/4"
380-40/12	40	1/2"
380-40/34	40	3/4"
380-50/100	50	1"
380-50/112	50	1 1/2"
380-50/114	50	1 1/4"
380-50/200	50	2"
380-50/34	50	3/4"
380-60/100	60	1"
380-60/112	60	1 1/2"
380-60/114	60	1 1/4"
380-60/200	60	2"
380-60/212	60	2 1/2"
380-60/34	60	3/4"
380-70/200	70	2"
380-70/212	70	2 1/2"
380-80/200	80	2"
380-80/212	80	2 1/2"
380-80/300	80	3"
380-100/300	100	3"
380-100/400	100	4"
380-120/400	120	4"

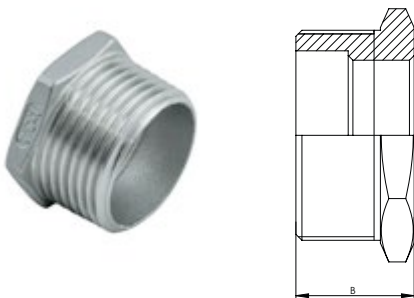
Microcast fittings

Raccorderia microfusa

La raccorderia microfusa proposta da VLS Components comprende: valvole a sfera acciaio inox AISI 316, Tappi m/f, riduzioni, nipples, manicotti, bocchettoni, portagomma, gomiti e tee filettati. I raccordi microfusi sono costruiti in acciaio inox AISI 316 con misure da 1/8" a 2".

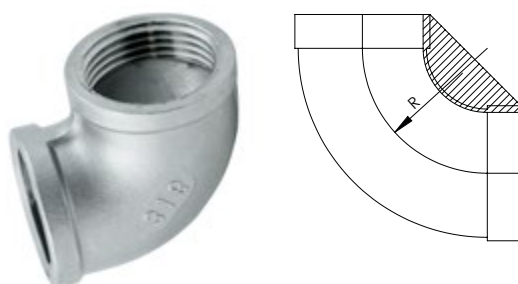
VLS Components microcast fittings include: AISI 316 stainless steel ball valves, plugs and caps, reducers, nipples, muffs, unions, hose nipples, threaded tees and elbows. Microcast fittings are made of AISI 316 stainless steel and range from 1/8" to 2".

art. 1305
RIDUZIONE MASCHIO/FEMMINA
Male/female microcast reducer



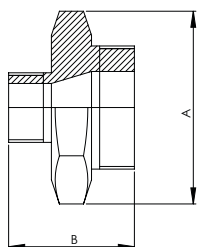
CODICE / CODE	FILETTO GAS / BSP
6-1305-14/18	1/4" - 1/8"
6-1305-38/14	3/8"-1/4"
6-1305-12/14	1/2"-1/4"
6-1305-12/38	1/2"-3/8"
6-1305-34/38	3/4"-3/8"
6-1305-34/12	3/4"-1/2"
6-1305-100/12	1"-1/2"
6-1305-100/34	1"-3/4"
6-1305-114/12	1 1/4" - 1/2"
6-1305-114/34	1 1/4" - 3/4"
6-1305-114/100	1 1/4"-1"
6-1305-112/100	1 1/2"-1"
6-1305-112/114	1 1/2"-1 1/4"
6-1305-200/100	2"-1"
6-1305-200/114	2"-1 1/4"
6-1305-200/112	2"-1 1/2"

art. 1505
GOMITO FILETTATO FEMMINA/FEMMINA
90° microcast elbow female thread



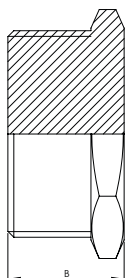
CODICE / CODE	FILETTO GAS / BSP
6-1505-18	1/8"
6-1505-14	1/4"
6-1505-38	3/8"
6-1505-12	1/2"
6-1505-34	3/4"
6-1505-100	1"
6-1505-114	1-1/4"
6-1505-112	1-1/2"
6-1505-200	2"
6-1505-212	2 1/2"
6-1505-300	3"
6-1505-400	4"

art. 1255
NIPPLE ESAGONALE RIDOTTO
Microcast reducing exagon nipple



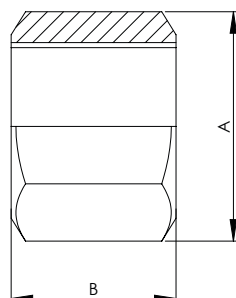
CODICE / CODE	FILETTO GAS / BSP
6-1255-14/18	1/4" - 1/8"
6-1255-38/18	3/8"-1/8"
6-1255-38/14	3/8"-1/4"
6-1255-12/14	1/2"-1/4"
6-1255-12/38	1/2"-3/8"
6-1255-34/38	3/4"-3/8"
6-1255-34/12	3/4"-1/2"
6-1255-100/12	1"-1/2"
6-1255-100/34	1"-3/4"
6-1255-114/12	1 1/4" - 1/2"
6-1255-114/34	1 1/4" - 3/4"
6-1255-114/100	1 1/4"-1"
6-1255-112/34	1 1/2"-3/4"
6-1255-112/100	1 1/2"-1"
6-1255-112/114	1 1/2"-1 1/4"
6-1255-200/100	2"-1"
6-1255-200/114	2"-1 1/4"
6-1255-200/112	2"- 1 1/2"

art. 1405
TAPPO MASCHIO
Microcast head plug



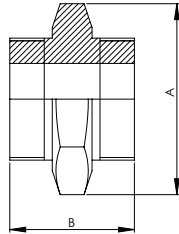
CODICE / CODE	FILETTO GAS / BSP
6-1405-18	1/8"
6-1405-14	1/4"
6-1405-38	3/8"
6-1405-12	1/2"
6-1405-34	3/4"
6-1405-100	1"
6-1405-114	1-1/4"
6-1405-112	1-1/2"
6-1405-200	2"
6-1405-212	2 1/2"
6-1405-300	3"
6-1405-400	4"

art. 1455
TAPPO FEMMINA
Microcast cap



CODICE / CODE	FILETTO GAS / BSP
6-1455-18	1/8"
6-1455-14	1/4"
6-1455-38	3/8"
6-1455-12	1/2"
6-1455-34	3/4"
6-1455-100	1"
6-1455-114	1-1/4"
6-1455-112	1-1/2"
6-1455-200	2"
6-1405-212	2 1/2"
6-1405-300	3"
6-1405-400	4"

art. 1205
NIPPLE ESAGONALE
Microcast exagon nipple



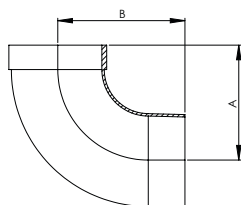
CODICE / CODE	FILETTO GAS / BSP
6-1205-18	1/8"
6-1205-14	1/4"
6-1205-38	3/8"
6-1205-12	1/2"
6-1205-34	3/4"
6-1205-100	1"
6-1205-114	1-1/4"
6-1205-112	1-1/2"
6-1205-200	2"
6-1205-212	2 1/2"
6-1205-300	3"
6-1205-400	4"

art. 1655
CROCE FILETTATA FEM-FEM-FEM-FEM
Cross fem-fem-fem-fem



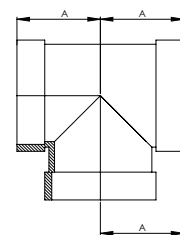
CODICE / CODE	FILETTO GAS / BSP
6-1655-14	1/4"
6-1655-38	3/8"
6-1655-12	1/2"
6-1655-34	3/4"
6-1655-100	1"
6-1655-114	1-1/4"
6-1655-112	1-1/2"
6-1655-200	2"

art. 1555
GOMITO MASCHIO/FEMMINA
90° microcast elbow male/female thread



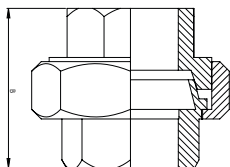
CODICE / CODE	FILETTO GAS / BSP
6-1555-18	1/8"
6-1555-14	1/4"
6-1555-38	3/8"
6-1555-12	1/2"
6-1555-34	3/4"
6-1555-100	1"
6-1555-114	1-1/4"
6-1555-112	1-1/2"
6-1555-200	2"
6-1555-212	2 1/2"
6-1555-300	3"

art. 1605
TEE FILETTATO FEMMINA/FEMMINA
Microcast tee female thread



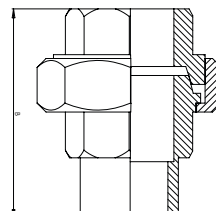
CODICE / CODE	FILETTO GAS / BSP
6-1605-18	1/8"
6-1605-14	1/4"
6-1605-38	3/8"
6-1605-12	1/2"
6-1605-34	3/4"
6-1605-100	1"
6-1605-114	1-1/4"
6-1605-112	1-1/2"
6-1605-200	2"
6-1605-212	2 1/2"
6-1605-300	3"

art. 1705
BOCCHETTONE CONICO FEMMINA/FEMMINA
Microcast conical union



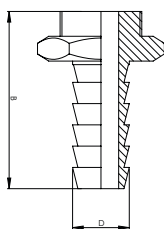
CODICE / CODE	FILETTO GAS / BSP
6-1705-18	1/8"
6-1705-14	1/4"
6-1705-38	3/8"
6-1705-12	1/2"
6-1705-34	3/4"
6-1705-100	1"
6-1705-114	1-1/4"
6-1705-112	1-1/2"
6-1705-200	2"
6-1705-212	2 1/2"
6-1705-300	3"
6-1705-400	4"

art. 1755
BOCCHETTONE CONICO MASCHIO/FEMMINA
Microcast male/female conical union



CODICE / CODE	FILETTO GAS / BSP
6-1755-18	1/8"
6-1755-14	1/4"
6-1755-38	3/8"
6-1755-12	1/2"
6-1755-34	3/4"
6-1755-100	1"
6-1755-114	1-1/4"
6-1755-112	1-1/2"
6-1755-200	2"
6-1755-212	2 1/2"
6-1755-300	3"
6-1755-400	4"

art. 1905
PORTAGOMMA MASCHIO
Microcast hose liner



CODICE / CODE	FILETTO GAS / BSP
6-1905-18	1/8"
6-1905-14	1/4"
6-1905-38	3/8"
6-1905-12	1/2"
6-1905-34	3/4"
6-1905-100	1"
6-1905-114	1-1/4"
6-1905-112	1-1/2"
6-1905-200	2"
6-1905-212	2 1/2"
6-1905-300	3"
6-1905-400	4"

art. 8005
VALVOLA A SFERA FEMMINA/FEMMINA
Microcast ball valve bsp female/bsp female



CODICE / CODE	FILETTO GAS / BSP
6-8005-14	1/4"
6-8005-38	3/8"
6-8005-12	1/2"
6-8005-34	3/4"
6-8005-100	1"
6-8005-114	1-1/4"
6-8005-112	1-1/2"
6-8005-200	2"
6-8005-212	2 1/2"
6-8005-300	3"
6-8005-400	4"

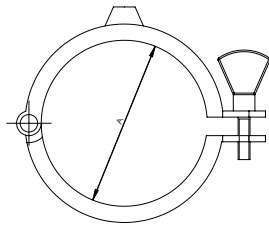
Steek pipe clamps

Reggitubo in acciaio

I reggitubo proposti da VLS Components sono completamente in acciaio inox, nelle versioni economico (con le viti ai lati) e a cerniera. Sono adatti per tubazioni da 17 a 219 mm e completi di tutta la viteria.

Pipe clamps by VLS Components are entirely made of stainless steel and are available in the economical version (with side screws) and in the hinge version. Suitable for pipes ranging from 17 to 219 mm and supplied with all the necessary screws.

art. 1305
RIDUZIONE MASCHIO/FEMMINA
Male/female microcast reducer

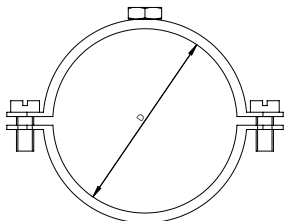


CODICE / CODE	DN	A
4-740-15	15	18
4-740-20	20	22
4-740-25	25	28
4-740-32	32	34

4-740-40	40	40
4-740-50	50	52
4-740-65	65	70
4-740-80	80	85
4-740-100	100	101,6

4-741-25	25,4
4-741-38	38,1
4-741-42	42,4
4-741-48	48,3
4-741-60	60,3
4-741-63	63,5
4-741-76	76,1
4-741-80	80
4-741-88	88,9
4-741-104	104
4-741-114	114,3

art. 750
REGGITUBO ECONOMICO
Economical pipe clamp (with side screws)



CODICE / CODE	POLLICI	D
4-750-17	3/8"	17,2
4-750-21	1/2"	21,3
4-750-26	3/4"	26,9
4-750-33	1"	33,7
4-750-42	1 1/4"	42,4
4-750-48	1 1/2"	48,3
4-750-60	2"	60,3
4-750-76	2 1/2"	76,1
4-750-88	3"	88,9
4-750-101	3 1/2"	101,6
4-750-114	4"	114,3
4-750-129		129
4-750-139	5"	139,7
4-750-154		154
4-750-168	6"	168,3

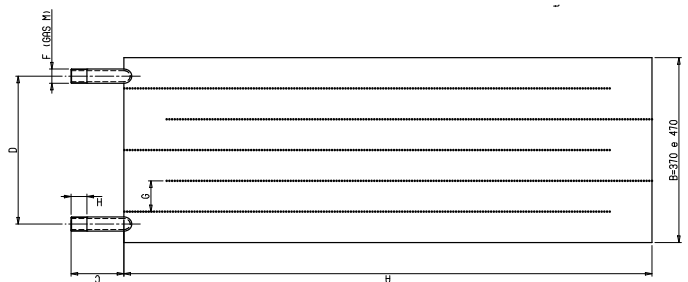
Heat exchange plates

Piastre refrigeranti

Le piastre refrigeranti proposte da VLS Components sono completamente in acciaio inox, disponibili sia in AISI 304 che in AISI 316.

Heat exchange plates by VLS Components are entirely made of stainless steel both AISI 304 and AISI 316.

art. 1030
PIASTRE REFRIGERANTI A CANALINA
Heat exchange plates



CODICE / CODE	B MM.	A MM.	D MM.	C MM.	ATTACCHI CONNECTIONS
1030-270/1000	270	1000	210	300	1/2"
1030-270/1200	270	1200	210	300	1/2"
1030-270/1400	270	1400	210	300	1/2"
1030-270/1600	270	1600	210	300	1/2"
1030-270/1800	270	1800	210	300	1/2"
1030-270/2000	270	2000	210	300	1/2"
1030-270/2500	270	2500	210	300	1/2"
1030-270/3000	270	3000	210	300	1/2"
1030-370/1000	370	1000	290	300	1/2"
1030-370/1200	370	1200	290	300	1/2"
1030-370/1400	370	1400	290	300	1/2"
1030-370/1600	370	1600	290	300	1/2"
1030-370/1800	370	1800	290	300	1/2"
1030-370/2000	370	2000	290	300	1/2"
1030-370/2500	370	2500	290	300	1/2"
1030-370/3000	370	3000	290	300	1/2"
1030-370/3500	370	3500	290	300	1/2"
1030-370/4000	370	4000	290	300	1"
1030-370/5000	370	5000	290	300	1"
1030-370/6000	370	6000	290	300	1"
1030-370/7000	370	7000	290	300	1"
1030-470/1000	470	1000	380	300	1/2"
1030-470/1200	470	1200	380	300	1/2"
1030-470/1400	470	1400	380	300	1/2"

1030-470/1600	470	1600	380	300	1/2"
1030-470/1800	470	1800	380	300	1/2"
1030-470/2000	470	2000	380	300	1/2"
1030-470/2500	470	2500	380	300	1/2"
1030-470/3000	470	3000	380	300	1/2"
1030-470/3500	470	3500	380	300	1/2"

CODICE / CODE	B MM.	A MM.	D MM.	C MM.	ATTACCHI CONNECTIONS
1030-470/4000	470	4000	380	300	1"
1030-470/5000	470	5000	380	300	1"
1030-470/6000	470	6000	380	300	1"
1030-470/7000	470	7000	380	300	1"
1030-570/100	570	1000	460	300	1/2"
1030-570/1200	570	1200	460	300	1/2"
1030-570/1400	570	1400	460	300	1/2"
1030-570/1600	570	1600	460	300	1/2"
1030-570/1800	570	1800	460	300	1/2"
1030-570/2000	570	2000	460	300	1/2"
1030-570/2500	570	2500	460	300	1/2"
1030-570/3000	570	3000	460	300	1/2"
1030-570/3500	570	3500	460	300	1/2"
1030-570/4000	570	4000	460	300	1"
1030-570/5000	570	5000	460	300	1"
1030-570/6000	570	6000	460	300	1"
1030-570/7000	570	7000	460	300	1"

Valves

Valvole

Le valvole proposte da VLS Components comprendono la gamma di Valvole a sfera, a farfalla, valvole bivalenti per azoto e valvole di non ritorno. Le misure per le valvole a sfera vanno da DN15 a DN100. Le misure per le valvole a farfalla vanno da DN25 a DN100. Le valvole di non ritorno possono essere stampate o ricavate da pieno, le misure vanno da 1/4" a 2". Sono in acciaio AISI 304 o AISI 316 a richiesta.

art. 900
VALVOLA A FARFALLA CON MANIGLIA A 2 POSIZIONI (APRI/CHIUDI) A SALDARE
Butterfly valve with handle 2 positions (open/closed) weld

CODICE / CODE	FILETTO GAS / BSP	MM.
900-SA28/SA28	1/8"	28
900-SA34/SA34	1/4"	34
900-SA40/SA40	3/8"	52
900-SA52/SA52	1/2"	52
900-SA60/SA60	3/4"	60
900-SA70/SA70	1"	70
900-SA85-SA85	1 1/4"	85
900-SA101/SA101	1 1/2"	101

art. 903
VALVOLA A FARFALLA CON MANIGLIA A 2 POSIZIONI (APRI/CHIUDI) DIN FEMMINA/FEMMINA
Butterfly valve with handle 2 positions (open/closed)
DIN male/male

CODICE / CODE	FILETTO GAS / BSP	DN
903-25	1/8"	25
903-32	1/4"	32
903-40	3/8"	40
903-50	1/2"	50
903-60	3/4"	60
903-65	1"	65
903-80	1 1/4"	80
903-100	1 1/2"	100

Valves by VLS Components include ball valves, butterfly valves, two-way valves for nitrogen and non-return valves. Sizes of ball valves range from DN15 to DN100. Sizes of butterfly valves range from DN25 to DN100. Non-return valves can be stamped or forged from a single block, their sizes range from 1/4" to 2". They can be produced in AISI 304 or 316 stainless steel, depending on the customer's needs.

art. 902
VALVOLA A FARFALLA CON MANIGLIA A 2 POSIZIONI (APRI/CHIUDI) DIN MASCHIO GIRELLA/FEMMINA
Butterfly valve with handle 2 positions (open/closed)
DIN liner/male

CODICE / CODE	FILETTO GAS / BSP	DN
902-25	1/8"	25
902-32	1/4"	32
902-40	3/8"	40
902-50	1/2"	50
902-60	3/4"	60
902-65	1"	65
902-80	1 1/4"	80
902-100	1 1/2"	100



art. 4-810-DF/DF
VALVOLA A SFERA DIN FEMMINA/FEMMINA
Ball valve DIN male/male

CODICE / CODE	DN
4-810-DF25/DF25	25
4-810-DF32/DF32	32
4-810-DF40/DF40	40
4-810-DF50/DF50	50
4-810-DF65/DF65	65
4-810-DF80/DF80	80
4-810-DF100/DF100	100

art. 4-810-DM/DM
VALVOLA A SFERA DIN MASCHIO GIRELLA/MASCHIO
GIRELLA
Ball valve DIN liner nut/liner nut

CODICE / CODE	DN
4-810-DM25/DM25	25
4-810-DM32/DM32	32
4-810-DM40/DM40	40
4-810-DM40/DF50	50
4-810-DM65/DF65	65
4-810-DM8, /DF80	80
4-810-DM100/DF100	100

art. 4-810-DM/DF
VALVOLA A SFERA DIN MASCHIO GIRELLA/FEMMINA
Ball valve DIN liner nut/male

CODICE / CODE	DN
4-810-DM25/DF25	25
4-810-DM32/DF32	32
4-810-DM40/DF40	40
4-810-DM40/DF50	50
4-810-DM65/DF65	65
4-810-DM8, /DF80	80
4-810-DM100/DF100	100

art. 4-810-FG/FG
VALVOLA A SFERA FEMMINA/FEMMINA GAS
Ball valve BSP female/female

CODICE / CODE	FILETTO GAS / BSP THREAD
4-810-FG100/FG100	1"
4-810-FG114-FG114	1 1/4"
4-810-FG112/FG112	1 1/2"
4-810-FG200/FG200	2"
4-810-FG212/FG212	2 1/2"
4-810-FG300/FG300	3"
4-810-FG400/FG400	4"



art. 4-810-CL/CL
VALVOLA A SFERA CLAMP/CLAMP
Ball valve clamp/clamp

CODICE / CODE	FILETTO GAS / BSP THREAD
4-810-CL100/CL100	1"
4-810-CL112/CL112	1 1/2"
4-810-CL200/CL200	2"
4-810-CL212/CL212	2 1/2"
4-810-CL300/CL300	3"
4-810-CL400/CL400	4"

art. 910
VALVOLA DI NON RITORNO STAMPATA
Non-return valve from plates



CODICE / CODE	POLLICI / INCHES
910-14	1/4"
910-38	3/8"
910-12	1/2"
910-34	3/4"
910-100	1"
910-114	1 1/4"
910-112	1 1/2"
910-200	2"
910-212	2 1/2"
910-300	3"

art. 915
VALVOLA DI NON RITORNO DA MASSELLO
Non-return valve from bars



CODICE / CODE	POLLICI / INCHES
915-14	1/4"
915-38	3/8"
915-12	1/2"
915-34	3/4"
915-100	1"
915-114	1 1/4"
915-112	1 1/2"
915-200	2"

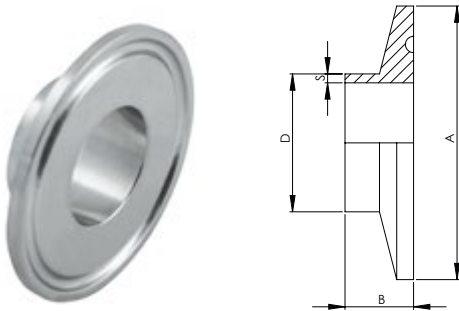
Clamp fittings

Raccorderia clamp

I raccordi CLAMP proposti da VLS Components sono composti da morsetti, tronchetti (versione lunga e corta), tappi, portagomma, curve e tee raccordati clamp. Realizzati in acciaio inox AISI 316, con misure da 1/2" a 6".

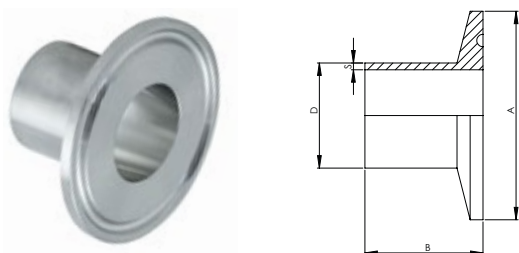
CLAMP fittings by VLS Components include clamps, ferrules (long and short version), caps and plugs, hose nipples, bends and tees with CLAMP fittings. They are produced in stainless steel AISI 316 and measure from 1/2" to 6".

art. 6-3000
TRONCHETTO CLAMP CORTO
Short welding ferrule



CODICE / CODE	POLLICI / INCHES	A	D	B	S
6-3000-12	1/2"	25,4	12,7	12,7	1,65
6-3000-34	3/4"	25,4	19,05	12,7	1,65
6-3000-100	1"	50,4	25,4	12,7	1,65
6-3000-112	1 1/2"	50,4	38,1	12,7	1,65
6-3000-200	2"	64,0	50,8	12,7	1,65
6-3000-212	2 1/2"	77,4	63,5	12,7	1,65
6-3000-300	3"	90,9	76,2	12,7	1,65
6-3000-400	4"	118,80	101,6	15,8	2,11

art. 6-3001
TRONCHETTO CLAMP LUNGO
Long welding ferrule



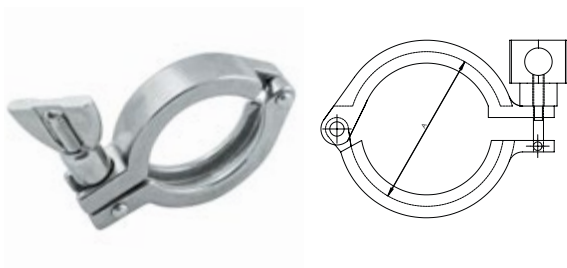
CODICE / CODE	POLLICI / INCHES	A	D	B	S
6-3001-12	1/2"	25,4	12,7	28,6	1,65
6-3001-34	3/4"	25,4	19,05	28,6	1,65
6-3001-100	1"	50,4	25,4	28,6	1,65
6-3001-112	1 1/2"	50,4	38,1	28,6	1,65
6-3001-200	2"	64,0	50,8	28,6	1,65
6-3001-212	2 1/2"	77,4	63,5	28,6	1,65
6-3001-300	3"	90,9	76,2	28,6	1,65
6-3001-400	4"	118,8	101,6	28,6	2,11

art. 6-3100
TAPPO CLAMP
Solid end cap



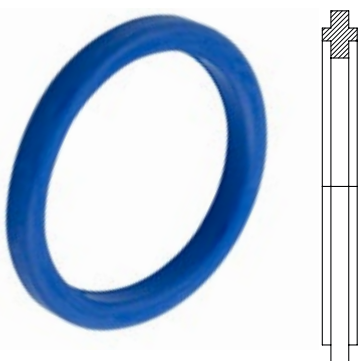
CODICE / CODE	POLLICI / INCHES	A	B
6-3100-12	1/2" - 3/4"	25,4	4,7
6-3100-100	1" - 1 1/2"	50,4	6,4
6-3100-200	2"	64,0	6,4
6-3100-212	2 1/2"	77,4	6,4
6-3100-300	3"	90,9	6,4
6-3100-400	4"	118,8	7,9

art. 6-3200
MORSETTO CLAMP
Heavy duty clamp



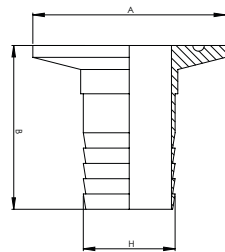
CODICE / CODE	POLLICI / INCHES
6-3200-12	1/2" - 3/4"
6-3200-100	1" - 1 1/2"
6-3200-200	2"
6-3200-212	2 1/2"
6-3200-300	3"
6-3200-400	4"

art. 6-3310
GUARNIZIONI CLAMP
Clamp sealing ring



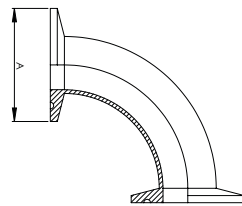
CODICE / CODE	POLLICI / INCHES
9-3310-12	1/2"
9-3310-34	3/4"
9-3310-100	1"
9-3310-112	1 1/2"
9-3310-200	2"
9-3310-212	2 1/2"
9-3310-300	3"
9-3310-400	4"

art. 6-3400
PORTAGOMMA CLAMP
Clamp hose holder



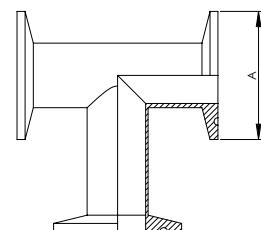
CODICE / CODE	POLLICI / INCHES	A	H	B
6-3400-12	1/2"	25,4	12,7	38,1
6-3400-34	3/4"	25,4	19,05	38,1
6-3400-100	1"	50,4	25,4	42,9
6-3400-112	1 1/2"	50,4	38,1	42,9
6-3400-200	2"	64,0	50,8	58,7
6-3400-212	2 1/2"	77,4	63,5	59,5
6-3400-300	3"	90,9	76,2	78,9
6-3400-400	4"	118,8	101,6	86,5

art. 6-5200
CURVA CON RACCORDI CLAMP
90° clamp elbow



CODICE / CODE	POLLICI / INCHES	A
6-5200-12	1/2"	25,4
6-5200-34	3/4"	25,4
6-5200-100	1"	50,4
6-5200-112	1 1/2"	50,4
6-5200-200	2"	64,0
6-5200-212	2 1/2"	77,4
6-5200-300	3"	90,9
6-5200-400	4"	118,8

art. 6-6300
TEE CON RACCORDI CLAMP
Tee clamp



CODICE / CODE	POLLICI / INCHES	A
6-6300-12	1/2"	25,4
6-6300-34	3/4"	25,4
6-6300-100	1"	50,4
6-6300-112	1 1/2"	50,4
6-6300-200	2"	64,0
6-6300-212	2 1/2"	77,4
6-6300-300	3"	90,9
6-6300-400	4"	118,8

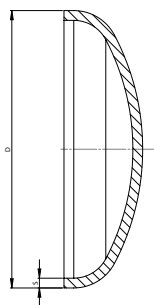
Welding fittings

Raccorderia a saldare

I raccordi a saldare proposti da VLS Components sono composti da: cartelle, tee, riduzioni (eccentriche e concentriche), curve, croci, Y e fondi bombati. Vengono offerti sia in acciaio AISI 304 che in AISI 316 con spessori di 2 o 3 mm, per tubazioni da 10 a 400 mm.

Welding fittings by VLS Components include: collars, tees, reducers (eccentric and concentric) bends, cross fittings, Y's and convex bottoms. They are available both in AISI 304 and in AISI 316 stainless steel. Thickness is 2 or 3 mm, for pipes ranging from 10 to 400 mm.

art. 700
FONDO BOMBATO
Convex bottom

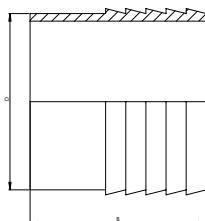


CODICE / CODE	D	S
700-17/20	17,2	2
700-21/20	21,3	2
700-21/30	21,3	3
700-26/20	26,9	2
700-26/30	26,9	3
700-33/20	33,7	2
700-33/30	33,7	3
700-42/20	42,4	2
700-42/30	42,4	3
700-48/20	48,3	2
700-48/30	48,3	3
700-60/20	60,3	2
700-60/30	60,3	3
700-70/20	70,0	2
700-76/20	76,1	2

700-76/30	76,1	3
700-80/20	80,0	2
700-84/20	84,0	2
700-88/20	88,9	2
700-88/30	88,9	3
700-101/20	101,6	2
700-101/30	101,6	3
700-114/20	114,3	2
700-114/30	114,3	3
700-129/20	129,0	2
700-139/20	139,7	2

CODICE / CODE	D	S
700-139/30	139,7	3
700-154/20	154,0	2
700-168/20	168,3	2
700-168/30	168,3	3
700-204/20	204,0	2
700-219/20	219,1	2
700-219/30	219,1	3
700-254/20	254,0	2
700-273/20	273,2	2
700-273/30	273,2	3
700-304/20	304,6	2
700-323/20	323,9	2
700-323/30	323,9	3

art. 720-721
PORTAGOMMA
Welding hose holder



CODICE / CODE	D	B
4-721-12	12	32
4-721-15	15	40
4-721-17	17,2	50
4-721-20	20	50
4-720-20	21	50
4-721-25	25	50
4-720-25	26,5	50
4-721-30	30	50
4-720-30	31,5	50
4-721-33	33,7	50
4-720-35	34,7	50
4-721-40	40,0	65
4-720-40	41	65
4-721-48	48,3	65
4-721-50	50	60
4-720-50	51	65
4-721-60	60,1	60
4-720-60	61,5	65
4-720-70	70	70
4-720-80	81,5	85
4-720-100	101	106
4-720-120	121,5	110

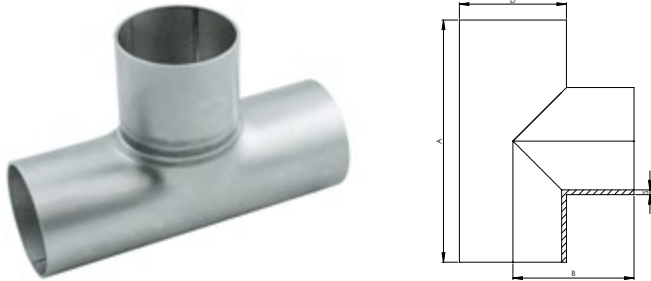
art. 790
CARTELLA
Collar



CODICE / CODE	D	S	DN	POLLICI
790-21/20	21,3	2	15	1/2"
790-21/30	21,3	3	15	1/2"
790-26/20	26,9	2	20	3/4"
790-26/30	26,9	3	20	3/4"
790-33/20	33,7	2	25	1"
790-33/30	33,7	3	25	1"
790-42/20	42,4	2	32	1" 1/4
790-42/30	42,4	3	32	1" 1/4

790-48/20	48,3	2	40	1" 1/2
790-48/30	48,3	3	40	1" 1/2
790-60/20	60,3	2	50	2"
790-60/30	60,3	3	50	2"
790-76/20	76,1	2	65	2" 1/2
790-76/30	76,1	3	65	2" 1/2
790-88/20	88,9	2	80	3"
790-88/30	88,9	3	80	3"
790-101/20	101,6	2	90	3-1/2"
790-114/20	114,3	2	100	4"
790-114/30	114,3	3	100	4"
790-129/20	129,1	2		
790-139/20	139,0	2	125	5"
790-139/30	139,0	3	125	5"
790-154/20	154,0	2		
790-168/20	168,3	2	150	6"
790-168/30	168,3	3	150	6"
790-204/20	204,0	2		
790-219/20	219,0	2		
790-219/30	219,0	3	200	8"

art. 600
TEE A SALDARE
Welding tee



CODICE / CODE	D	R
600-18/15	18,0	1,5
600-20/15	20,0	1,5
600-21/20	21,3	2
600-21/30	21,3	3
600-25/15	25,0	1,5
600-26/20	26,9	2
600-26/30	26,9	3
600-28/15	28,0	1,5
600-30/20	30,0	2
600-33/15	33,7	1,5
600-33/20	33,7	2
600-33/30	33,7	3
600-38/15	38,0	1,5

600-42/20	42,4	2
600-42/30	42,4	3
600-44/20	44,0	2
600-48/20	48,3	2
600-48/30	48,3	3
600-50/15	50,8	1,5
600-54/20	54,0	2
600-60/20	60,3	2
600-60/30	60,3	3
600-63/15	63,5	1,5
600-70/20	70,0	2
600-76/20	76,1	2
600-76/30	76,1	3
600-88/20	88,9	2
600-88/30	88,9	3
600-101/20	101,6	2
600-101/30	101,6	3
600-104/20	104,0	2
600-114/20	114,3	2
600-114/30	114,3	3
600-139/20	139,0	2
600-139/30	139,0	3
600-168/20	168,3	2
600-168/30	168,3	3
600-219/20	219,1	2
600-219/30	219,1	3

art. 650
RIDUZIONE CONCENTRICA A SALDARE
Concentric reducer



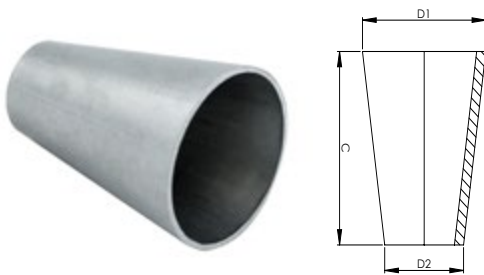
CODICE / CODE	S	POLLICI / INCHES	Ø
650-26/17	2	3/4"-3/8"	26,9-17,2
652-26/17	3	3/4"-3/8"	26,9-17,2
650-33/17	2	1"-3/8"	33,7-17,2
652-33/17	3	1"-3/8"	33,7-17,2
650-33/21	2	1"-1/2"	33,7-21,3
652-33/21	3	1"-1/2"	33,7-21,3

650-33/26	2	1"-3/4"	33,7-26,9
652-33/26	3	1"-3/4"	33,7-26,9
650-42/21	2	1 1/4"-1/2"	42,4-21,3
652-42/21	3	1 1/4"-1/2"	42,4-21,3
650-42/26	2	1 1/4"-3/4"	42,4-26,9
652-42/26	3	1 1/4"-3/4"	42,4-26,9
650-42/33	2	1 1/4"-1"	42,4-33,7
652-42/33	3	1 1/4"-1"	42,4-33,7
650-48/21	2	1 1/2"-1/2"	48,3-21,3
652-48/21	3	1 1/2"-1/2"	48,3-21,3
650-48/26	2	1 1/2"-3/4"	48,3-26,9
652-48/26	3	1 1/2"-3/4"	48,3-26,9
650-48/33	2	1 1/2"-1"	48,3-33,7
652-48/33	3	1 1/2"-1"	48,3-33,7
650-48/42	2	1 1/2"-1 1/4"	48,3-42,4
652-48/42	3	1 1/2"-1 1/4"	48,3-42,4
650-60/21	2	2"-1/2"	60,3-21,3

652-60/21	3	2"-1/2"	60,3-21,3
650-60/26	2	2"-3/4"	60,3-26,9
652-60/26	3	2"-3/4"	60,3-26,9
650-60/33	2	2"-1"	60,3-33,7
652-60/33	3	2"-1"	60,3-33,7
650-60/42	2	2"-1 1/4"	60,3-42,4
652-60/42	3	2"-1 1/4"	60,3-42,4
650-60/48	2	2"-1 1/2"	60,3-48,3
652-60/48	3	2"-1 1/2"	60,3-48,3

650-76/26	2	2 1/2"-3/4"	76,1-26,9
652-76/26	3	2 1/2"-3/4"	76,1-26,9
650-76/33	2	2 1/2"-1"	76,1-33,7
652-76/33	3	2 1/2"-1"	76,1-33,7
650-76/42	2	2 1/2"-1 1/4"	76,1-42,4
652-76/42	3	2 1/2"-1 1/4"	76,1-42,4
650-76/48	2	2 1/2"-1 1/2"	76,1-48,3
652-76/48	3	2 1/2"-1 1/2"	76,1-48,3
650-76/60	2	2 1/2"-2"	76,1-60,3

art. 650-652
RIDUZIONE CONCENTRICA A SALDARE
Concentric reducer

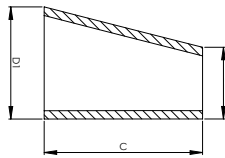


650-139/60	2	5"-2"	139,7-60,3
652-139/60	3	5"-2"	139,7-60,3
650-139/76	2	5"-2 1/2"	139,7-76,1
652-139/76	3	5"-2 1/2"	139,7-76,1
650-139/88	2	5"-3"	139,7-88,9
652-139/88	3	5"-3"	139,7-88,9

CODICE / CODE	S	POLLICI / INCHES	Ø
650-101/48	2	3 1/2"-1 1/2"	101,6-48,3
652-101/48	3	3 1/2"-1 1/2"	101,6-48,3
650-101/60	2	3 1/2"-2"	101,6-60,3
652-101/60	3	3 1/2"-2"	101,6-60,3
650-101/76	2	3 1/2"-2 1/2"	101,6-76,1
652-101/76	3	3 1/2"-2 1/2"	101,6-76,1
650-101/88	2	3 1/2"-3"	101,6-88,9
652-101/88	3	3 1/2"-3"	101,6-88,9
650-114/42	2	4"-1 1/4"	114,3-42,4
652-114/42	3	4"-1 1/4"	114,3-42,4
650-114/48	2	4"-1 1/2"	114,3-48,3
652-114/48	3	4"-1 1/2"	114,3-48,3
650-114/60	2	4"-2"	114,3-60,3
652-114/60	3	4"-2"	114,3-60,3
650-114/76	2	4"-2 1/2"	114,3-76,1
652-114/76	3	4"-2 1/2"	114,3-76,1
650-114/88	2	4"-3"	114,3-88,9
652-114/88	3	4"-3"	114,3-88,9
650-114/101	2	4"-3 1/2"	114,3-101,6
652-114/101	3	4"-3 1/2"	114,3-101,6

CODICE / CODE	S	POLLICI / INCHES	Ø
650-139/101	2	5"-3 1/2"	139,7-101,6
652-139/101	3	5"-3 1/2"	139,7-101,6
650-139/114	2	5"-4"	139,7-114,3
652-139/114	3	5"-4"	139,7-114,3
650-168/76	2	6"-2 1/2"	168,3-76,1
652-168/76	3	6"-2 1/2"	168,3-76,1
650-168/88	2	6"-3"	168,3-88,9
652-168/88	3	6"-3"	168,3-88,9
650-168/101	2	6"-3 1/2"	168,3-101,6
652-168/101	3	6"-3 1/2"	168,3-101,6
650-168/114	2	6"-4"	168,3-114,3
652-168/114	3	6"-4"	168,3-114,3
650-219/114	2	8"-4"	219,1-114,3
652-219/114	3	8"-4"	219,1-114,3
650-219/139	2	8"-5"	219,1-139,7
652-219/139	3	8"-5"	219,1-139,7
650-219/168	2	8"-6"	219,1-168,3
652-219/168	3	8"-6"	219,1-168,3
650-273/219	2	10"-8"	273-219,1
652-273/219	3	10"-8"	273-219,1

art. 665-666
 RIDUZIONE ECCENTRICA A SALDARE
 Eccentric reducer



CODICE / CODE	DN	S	POLLICI / INCHES	Ø
665-26/17	20-10	2	3/4"-3/8"	26,9-17,2
666-26/17	20-10	3	3/4"-3/8"	26,9-17,2
665-26/21	20-15	2	3/4"-1/2"	26,9-21,3
666-26/21	20-15	3	3/4"-1/2"	26,9-21,3
665-33/17	25-10	2	1"-3/8"	33,7-17,2
666-33/17	25-10	3	1"-3/8"	33,7-17,2
665-33/21	25-15	2	1"-1/2"	33,7-21,3
666-33/21	25-15	3	1"-1/2"	33,7-21,3
665-33/26	25-20	2	1"-3/4"	33,7-26,9
666-33/26	25-20	3	1"-3/4"	33,7-26,9
665-42/21	32-15	2	1 1/4"-1/2"	42,4-21,3
666-42/21	32-15	3	1 1/4"-1/2"	42,4-21,3
665-42/26	32-20	2	1 1/4"-3/4"	42,4-26,9
666-42/26	32-20	3	1 1/4"-3/4"	42,4-26,9
665-42/33	32-25	2	1 1/4"-1"	42,4-33,7
666-42/33	32-25	3	1 1/4"-1"	42,4-33,7
665-48/21	40-15	2	1 1/2"-1/2"	48,3-21,3
666-48/21	40-15	3	1 1/2"-1/2"	48,3-21,3
665-48/26	40-20	2	1 1/2"-3/4"	48,3-26,9
666-48/26	40-20	2	1 1/2"-3/4"	48,3-26,9
665-48/26	40-20	2	1 1/2"-3/4"	48,3-26,9
666-48/26	40-20	2	1 1/2"-3/4"	48,3-26,9
665-48/26	40-20	2	1 1/2"-3/4"	48,3-26,9
666-48/26	40-20	2	1 1/2"-3/4"	48,3-26,9
665-48/26	40-20	2	1 1/2"-3/4"	48,3-26,9
666-48/26	40-20	2	1 1/2"-3/4"	48,3-26,9
665-48/26	40-20	2	1 1/2"-3/4"	48,3-26,9
666-48/26	40-20	2	1 1/2"-3/4"	48,3-26,9
665-48/26	40-20	2	1 1/2"-3/4"	48,3-26,9
666-48/26	40-20	2	1 1/2"-3/4"	48,3-26,9
665-48/26	40-20	2	1 1/2"-3/4"	48,3-26,9
666-48/26	40-20	2	1 1/2"-3/4"	48,3-26,9
665-48/26	40-20	2	1 1/2"-3/4"	48,3-26,9
666-48/26	40-20	2	1 1/2"-3/4"	48,3-26,9
665-48/26	40-20	2	1 1/2"-3/4"	48,3-26,9
666-48/26	40-20	2	1 1/2"-3/4"	48,3-26,9
665-48/26	40-20	2	1 1/2"-3/4"	48,3-26,9
666-48/26	40-20	2	1 1/2"-3/4"	48,3-26,9
665-48/26	40-20	2	1 1/2"-3/4"	48,3-26,9
666-48/26	40-20	2	1 1/2"-3/4"	48,3-26,9
665-48/26	40-20	2	1 1/2"-3/4"	48,3-26,9
666-48/26	40-20	2	1 1/2"-3/4"	48,3-26,9
665-48/26	40-20	2	1 1/2"-3/4"	48,3-26,9
666-48/26	40-20	2	1 1/2"-3/4"	48,3-26,9
665-48/26	40-20	2	1 1/2"-3/4"	48,3-26,9
666-48/26	40-20	2	1 1/2"-3/4"	48,3-26,9
665-48/26	40-20	2	1 1/2"-3/4"	48,3-26,9
666-48/26	40-20	2	1 1/2"-3/4"	48,3-26,9
665-48/26	40-20	2	1 1/2"-3/4"	48,3-26,9
666-48/26	40-20	2	1 1/2"-3/4"	48,3-26,9
665-48/26	40-20	2	1 1/2"-3/4"	48,3-26,9
666-48/26	40-20	2	1 1/2"-3/4"	48,3-26,9

665-48/26	40-20	2	1 1/2"-3/4"	48,3-26,9
665-48/26	40-20	2	1 1/2"-3/4"	48,3-26,9
665-48/26	40-20	2	1 1/2"-3/4"	48,3-26,9
665-48/26	40-20	2	1 1/2"-3/4"	48,3-26,9
665-48/26	40-20	2	1 1/2"-3/4"	48,3-26,9
665-48/26	40-20	2	1 1/2"-3/4"	48,3-26,9
665-48/26	40-20	2	1 1/2"-3/4"	48,3-26,9
665-48/26	40-20	2	1 1/2"-3/4"	48,3-26,9
665-48/26	40-20	2	1 1/2"-3/4"	48,3-26,9
665-48/26	40-20	2	1 1/2"-3/4"	48,3-26,9
665-48/26	40-20	2	1 1/2"-3/4"	48,3-26,9
665-48/26	40-20	2	1 1/2"-3/4"	48,3-26,9
665-48/26	40-20	2	1 1/2"-3/4"	48,3-26,9
665-48/26	40-20	2	1 1/2"-3/4"	48,3-26,9
665-48/26	40-20	2	1 1/2"-3/4"	48,3-26,9
665-48/26	40-20	2	1 1/2"-3/4"	48,3-26,9
665-48/26	40-20	2	1 1/2"-3/4"	48,3-26,9
665-48/26	40-20	2	1 1/2"-3/4"	48,3-26,9
665-48/26	40-20	2	1 1/2"-3/4"	48,3-26,9
665-114/76	100-65	2	4"-2 1/2"	114,3-76,1
666-114/76	100-65	3	4"-2 1/2"	114,3-76,1
665-114/88	100-80	2	4"-3"	114,3-88,9
666-114/88	100-80	3	4"-3"	114,3-88,9
665-114/101		2	4"-3-1/2"	114,3/101,6
666-114/101		3	4"-3/1/2"	114,3/101,6
665-139/60	125-50	2	5"-2"	139,7-60,3
666-139/60	125-50	3	5"-2"	139,7-60,3
665-139/76	125-65	2	5"-2 1/2"	139,7-76,1
666-139/76	125-65	3	5"-2 1/2"	139,7-76,1
665-139/88	125-80	2	5"-3"	139,7-88,9
666-139/88	125-80	3	5"-3"	139,7-88,9
665-139/101	125-100	2	5"-3-1/2"	139,7-101,6
666-139/101	125-100	3	5"-3-1/2"	139,7-101,6
665-139/114	125-100	2	5"-4"	139,7-114,3
666-139/114	125-100	3	5"-4"	139,7-114,3
665-168/60	150-50	2	6"-2"	168,7-60,3
666-168/60	150-50	3	6"-2"	168,7-60,3
665-168/76	150-65	2	6"-2 1/2"	168,3-76,1
666-168/76	150-65	3	6"-2 1/2"	168,3-76,1
665-168/88	150-80	2	6"-3"	168,3-88,9
666-168/88	150-80	3	6"-3"	168,3-88,9
665-168/114	150-100	2	6"-4"	168,3-114,3
666-168/114	150-100	3	6"-4"	168,3-114,3
665-168/139	150-125	2	6"-5"	168,3-139
666-168/139	150-125	3	6"-5"	168,3-139
665-219/114	200-100	2	8"-4"	219,1-114,3
666-219/114	200-100	3	8"-4"	219,1-114,3
665-219/139	200-125	2	8"-5"	219,1-139,7
666-219/139	200-125	3	8"-5"	219,1-139,7
665-219/168	200-150	2	8"-6"	219,1-168,3
666-219/168	200-150	3	8"-6"	219,1-168,3

Enological fittings

Raccorderia enologica

La raccorderia ENOLOGICA proposta da VLS Components è composta da raccordi maschio, femmina, girella (anche nella versione cieca). Sono realizzati in acciaio inox AISI 304 con misure da DN 20 a DN 50.

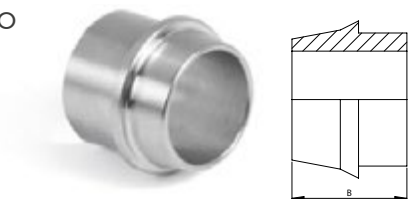
Enological fittings by VLS Components include welding male, liner and nut (also available in the blind version). They are produced in stainless steel AISI 304 and measure from DN 20 to DN 50.

art. 4-2400
RACCORDO FEMMINA
A SALDARE
Welding male



CODICE / CODE	DN	B
4-2400-25	25	27
4-2400-30	30	27
4-2400-35	35	30
4-2400-40	40	34
4-2400-50	50	30

art. 4-2500
RACCORDO MASCHIO
A SALDARE LISCIO
Welding liner



CODICE / CODE	DN	B
4-2500-25	25	28
4-2500-30	30	30
4-2500-35	35	30
4-2500-40	40	30
4-2500-50	50	34

art. 4-2600
GIRELLA
Nut



CODICE / CODE	DN	B
4-2600-25	25	17
4-2600-30	30	18
4-2600-35	35	18
4-2600-40	40	18
4-2600-50	50	20

art. 4-2650
GIRELLA CIECA
Blind nut



CODICE / CODE	DN	B
4-2650-25	25	17
4-2650-30	30	18
4-2650-35	35	18
4-2650-40	40	18
4-2650-50	50	20

Macon fittings

Raccorderia macon

La raccorderia MACON proposta da VLS Components è composta da raccordi maschio, femmina, girella (anche nella versione cieca). Realizzati in acciaio inox AISI 304 con misure da DN 40 a DN 100.

Macon fittings by VLS Components include welding male, liner and nut (also available in the blind version). They are produced in stainless steel AISI 304 and measure from DN 40 to DN 100.

art. 242
RACCORDO FEMMINA
A SALDARE MACON
FILETTATO
Macon welding male



CODICE / CODE	DN	B	A	C
4-242-40	40	21	70	1,5
4-242-50	50	21	79	1,5
4-242-60	60	26	94	2
4-242-70	70	26	105	2
4-242-80	80	30	117	3

art. 252
RACCORDO MASCHIO
A SALDARE MACON
LISCIO
Macon welding liner



CODICE / CODE	DN
4-252-40	40
4-252-50	50
4-252-60	60
4-252-70	70
4-252-80	80

art. 262
GIRELLA MACON
Macon nut



CODICE / CODE	DN
4-262-40	40
4-262-50	50
4-262-60	60
4-262-70	70
4-262-80	80

art. 267
GIRELLA CIECA MACON
Macon blind nut



CODICE / CODE	DN
4-267-40	40
4-267-50	50
4-267-60	60
4-267-70	70
4-267-80	80

DIN fittings

Raccorderia DIN

I raccordi per l'industria alimentare proposti da VLS Components sono raccordi DIN 11851 nelle versioni a mandrinare e a saldare. Realizzata la gamma completa di raccordi maschio, femmina, girella (anche nella versione cieca), guarnizioni, tappi, curve, riduzioni e tee. Sono realizzati completamente in acciaio inox AISI 304 o AISI 316 con misure da DN 10 a DN 100.

art. 220
FEMMINA DIN A
MANDRINARE FORGIATA
Expanding forged female
DIN



art. 230
MASCHIO DIN A
MANDRINARE FORGIATO
Expanding forged male DIN



art. 240
FEMMINA DIN A
SALDARE GROSSO
FORGIATA
Welding forged female DIN



The fittings produced by VLS Components for the foodstuffs industry are DIN 11851 fittings and are available in the welding and in the expanding versions. We also offer a complete range of male and liner fittings, nut (also available in the blind version), gaskets, caps, bends, reducers and tees. They are entirely produced in stainless steel AISI 304 or AISI 316 and measure from DN 10 to DN 100.

CODICE / CODE	DN	FILETTO / THREAD	TUBO / PIPE
220-15	15		18
220-20	20	44X1/8"	22
220-25	25	52X1/6"	28
220-32	32	58X1/6"	34
220-40	40	65X1/6"	40
220-50	50	78x1/6"	52
220-60	60	85x1/6"	60,3
220-65	65	95x1/6"	70
220-80	80	110x1/4"	85
220-100	100	130x1/4"	101,6

CODICE / CODE	DN	FILETTO / THREAD	TUBO / PIPE
230-15	15		18
230-20	20	44X1/8"	22
230-25	25	52X1/6"	28
230-32	32	58X1/6"	34
230-40	40	65X1/6"	40
230-50	50	78x1/6"	52
230-60	60	85x1/6"	60,3
230-65	65	95x1/6"	70
230-80	80	110x1/4"	85
230-100	100	130x1/4"	101,6

CODICE / CODE	DN	FILETTO / THREAD	SPESS / THICK	TUBO / PIPE
240-15	15		4,5	18
240-20	20	44X1/8"	5	22
240-25	25	52X1/6"	5	28
240-32	32	58X1/6"	5	34
240-40	40	65X1/6"	5,5	40
240-50	50	78x1/6"	5,5	52
240-60	60	85x1/6"	6	60,3
240-65	65	95x1/6"	6,5	70
240-80	80	110x1/4"	6,5	85
240-100	100	130x1/4"	8	101,6

Misure in AISI 316 disponibili su richiesta.
AISI 316 sizes available on demand.

art. 250
MASCHIO DIN A SALDARE
GROSSO FORGIATO
Welding forged male DIN



CODICE / CODE	DN	SPESS / THICK	TUBO / PIPE
250-15	15	4,5	18
250-20	20	5	22
250-25	25	5	28
250-32	32	5	34
250-40	40	5,5	40
250-50	50	5,5	52
250-60	60	6	60,3
250-65	65	6,5	70
250-80	80	6,5	85
250-100	100	8	101,6

art. 260
GIRELLA FORGIATA
DIN
Forged nut



CODICE / CODE	DN	FILETTO / THREAD
260-15	15	34x1/8"
260-20	20	44x1/8"
260-25	25	52x1/6"
260-32	32	58x1/6"
260-40	40	65x1/6"
260-50	50	78x1/6"
260-60	60	85x1/6"
260-65	65	95x1/6"
260-80	80	110x1/4"
260-100	100	130x1/4"

Misure in AISI 316 disponibili su richiesta.
AISI 316 sizes available on demand.

art. 266
GIRELLA CIECA FORGIATA
DIN CON CATENELLA
Blind forged nut with chain



CODICE / CODE	DN	FILETTO / THREAD
266-15	15	34x1/8"
266-20	20	44x1/8"
266-25	25	52x1/6"
265-32	32	58x1/6"
266-40	40	65x1/6"
266-50	50	78x1/6"
266-60	60	85x1/6"
266-65	65	95x1/6"
266-80	80	110x1/4"
266-100	100	130x1/4"

art. 270
TAPPO MASCHIO DIN
Male cap DIN



CODICE / CODE	DN
270-10	15
270-15	20
270-20	25
270-25	32
270-32	40
270-40	50
270-50	60
270-65	65
270-80	80
270-100	100

art. 277
GUARNIZIONI DIN
DIN Union disc



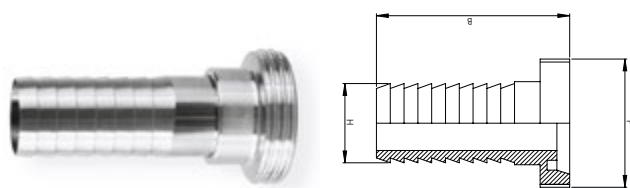
CODICE / CODE	DN
9.277.15	15
9.277.20	20
9.277.25	25
9.277.32	32
9.277.40	40
9.277.50	50
9.277.60	60
9.277.65	65
9.277.80	80
9.277.100	100

art. 278
GUARNIZIONI PIANE DIN
DIN Seal disc



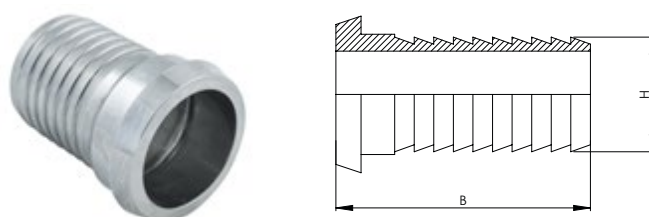
CODICE / CODE	DN
9-278-15	15
9-278-20	20
9-278-25	25
9-278-32	32
9-278-40	40
9-278-50	50
9-278-60	60
9-278-65	65
9-278-80	80
9-278-100	100

art. 280
PORTAGOMMA FEMMINA DIN
DIN Hose male part



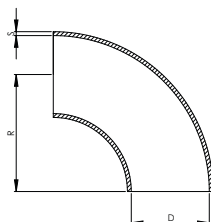
CODICE / CODE	DN	FILETTO / THREAD	H	B
4-280-15	15	34x1/8"	17	71
4-280-20	20	44x1/8"	21	74
4-280-25	25	52x1/6"	26,5	79
4-280-32	32	58x1/6"	31,5	82
4-280-40	40	65x1/6"	41	98
4-280-50	50	78x1/6"	51	100
4-280-60	60	85x1/6"	61,5	101
4-280-65	65	95x1/6"	70	110
4-280-80	80	110x1/4"	81,5	130
4-280-100	100	130x1/4"	101	160

art. 285
PORTAGOMMA MASCHIO DIN
DIN Hose liner



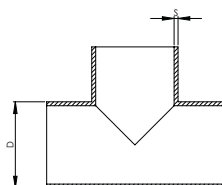
CODICE / CODE	DN	H	B
4-285-15	15	17	67
4-285-20	20	21	68
4-285-25	25	26,5	72
4-285-32	32	31,5	75
4-285-40	40	41	91
4-285-50	50	51	93
4-285-60	60	61,5	93
4-285-65	65	70	102
4-285-80	80	81,5	122
4-285-100	100	101	150

art. 510
CURVA 90° A MANDRINARE
LUCIDA ESTERNA SATINATA INTERNA
90° eldbow polished



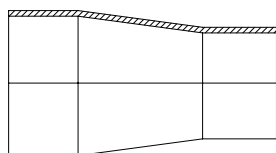
CODICE / CODE	DN	D	R	S
510-20	20	22	40	1,5
510-25	25	28	50	1,5
510-32	32	34	55	1,5
510-40	40	40	60	1,5
510-50	50	52	70	1,5
510-65	65	70	80	2
510-80	80	85	90	2
510-100	100	101,6	110	2

art. 610
TEE A MANDRINARE LUCIDO
ESTERNO SATINATO INTERNO
Expanding tee polished



CODICE / CODE	DN	D	S
610-20	15	22	1,5
610-25	20	28	1,5
610-32	25	34	1,5
610-40	32	40	1,5
610-50	40	52	1,5
610-65	50	70	2
610-80	60	85	2
610-100	65	101,6	2

art. 660
RIDUZIONE CONCENTRICA A MANDRINARE
Concentric reducer



CODICE / CODE	DN	D	SPES / THICK
660-20/15	20-15	22-18	1,5
660-25/15	25-15	28-18	1,5
660-25/20	25-20	22-22	1,5
660-32/20	32-20	34-22	1,5
660-32/25	32-25	34-28	1,5
660-40/20	40-20	40-22	1,5
660-40/25	40-25	40-28	1,5

660-40/32	40-34	40-34	1,5
660-50/25	50-25	52-28	1,5
660-50/32	50-32	52-34	1,5
660-50/40	50-40	52-40	1,5
660-60/32	60-32	60-34	1,5
660-60/40	60-40	60-40	1,5
660-60/50	60-50	60-52	1,5
660-65/32	65-32	70-34	1,5
660-65/40	65-40	70-40	1,5
660-65/50	65-50	70-52	1,5
660-65/60	65-60	70-60	1,5
660-80/50	80-50	80-52	2
660-80/65	80-65	80-70	2
660-100/50	100-50	101-52	2
660-100/65	100-65	101-70	2
660-100/80	100-80	101-85	2

Flanges

Flange

Le flange proposte da VLS Components comprendono sia la gamma in acciaio inox che una gamma completa di flange in alluminio. Sono ricavate da pieno e marchiate a freddo, possono essere realizzate anche su specifiche a disegno. Sono realizzate in acciaio AISI 304 o 316, nelle misure da DN 10 a DN 2000 (per tubo da 17,2 a 2020mm). Sono disponibili anche nella versione cieca senza foro centrale e nella versione con collarino. Le versioni proposte sono: PN 6, PN 10, PN 16, PN 25 e PN 40. Per la versione cieca anche PN 63 E PN 100 mentre per la versione con collare anche PN 64 e PN 100. Tutte le flange VLS Components rispettano le normative UNI EN 1092-1.

VLS Components flanges include both a stainless steel range and a complete range of aluminium flanges. They are forged from a single aluminium block and are cold-marked. They can also be reproduced according to requested sizes on technical drawings. Flanges are made of AISI 304 or 316 stainless steel and range from DN 10 to DN 2000 (for a pipe ranging from 17,2 to 2020 mm). They are also available in the blind version, without the central hole and in the version with collar. Here are the available versions: PN 6, PN 10, PN 16, PN 25 and PN 40. For the blind version, PN 63 and PN 100 are also available, while for the version with collar PN 64 and PN 100 are also available. All VLS Components flanges are in compliance with UNI EN 1092-1 rules.

art. 2276

FLANGIA PIANA UNI EN 1092-1 PN6 EX UNI 2276-67
Flange UNI EN 1092-1 PN6 EX UNI 2276-67



CODICE / CODE	DN	POLLICI / INCHES
2276-20	20	3/4"
2276-25	25	1"
2276-32	32	1 1/4"
2276-40	40	1 1/2"
2276-50	50	2"
2276-65	65	2 1/2"
2276-80	80	3"
2276-100	100	4"
2276-125	125	5"
2276-150	150	6"
2276-200	200	8"

art. 2278

FLANGIA PIANA UNI EN 1092-1 PN16 EX UNI 2278-67
Flange UNI EN 1092-1 PN16 EX UNI 2278-67



CODICE / CODE	DN	POLLICI / INCHES
2278-15	15	1/2"
2278-20	20	3/4"
2278-25	25	1"
2278-32	32	1 1/4"
2278-40	40	1 1/2"
2278-50	50	2"
2278-65	65	2 1/2"
2278-80	80	3"
2278-100	100	4"
2278-125	125	5"
2278-150	150	6"
2278-200	200	8"

art. 2278/1

FLANGIA RIDOTTA PN16 UNI 2278-67
Flange PN16 UNI 2278-67



CODICE / CODE	DN	POLLICI / INCHES
2278/1-25	25	1"
2278/1-32	32	1 1/4"
2278/1-40	40	1 1/2"
2278/1-50	50	2"
2278/1-65	65	2 1/2"
2278/1-80	80	3"
2278/1-100	100	4"
2278/1-125	125	5"
2278/1-150	150	6"
2278/1-200	200	8"

art. 6091
 FLANGIA CIECA UNI EN 1092-5 PN6 EX UNI 6091-67
 Flange UNI EN 1092-5 PN6 EX UNI 6091-67



CODICE / CODE	DN	POLLICI / INCHES
6091-15	15	1/2"
6091-20	20	3/4"
6091-25	25	1"
6091-32	32	1 1/4"
6091-40	40	1 1/2"
6091-50	50	2"
6091-65	65	2 1/2"
6091-80	80	3"
6091-100	100	4"
6091-125	125	5"
6091-150	150	6"
6091-200	200	8"

art. 6093
 FLANGIA CIECA UNI EN 1092-5 PN16 EX UNI 6093-67
 Flange UNI EN 1092-5 PN16 EX UNI 6093-67



CODICE / CODE	DN	POLLICI / INCHES
6093-15	15	1/2"
6093-20	20	3/4"
6093-25	25	1"
6093-32	32	1 1/4"
6093-40	40	1 1/2"
6093-50	50	2"
6093-65	65	2 1/2"
6093-80	80	3"
6093-100	100	4"
6093-125	125	5"
6093-150	150	6"
6093-200	200	8"

art. 2282
 FLANGIA A COLLARINO EN 1092-11 EX UNI 2282 PN16
 Flange UNI EN 1092-11 PN6



CODICE / CODE	DN	POLLICI / INCHES
2282-15	15	1/2"
2282-20	20	3/4"
2282-25	25	1"
2282-32	32	1 1/4"
2282-40	40	1 1/2"
2282-50	50	2"
2282-65	65	2 1/2"
2282-80	80	3"
2282-100	100	4"
2282-125	125	5"
2282-150	150	6"
2282-200	200	8"

art. 6089
FLANGIA ALLUMINIO ISO
Alluminium flange ISO



CODICE/CODE	DN	D1	D2	D3	FORI/HOLES	S
3-6089-15	15	95	20	14	4	12
3-6089-20	20	105	30	14	4	12
3-6089-25	25	115	36	14	4	12
3-6089-32	32	140	46	18	4	16
3-6089-40	40	150	54	18	4	16
3-6089-50	50	165	65	18	4	16
3-6089-65	65	185	81	18	4	16
3-6089-80	80	200	94	18	8	18
3-6089-100	100	220	112	18	8	18
3-6089-125	125	250	144	18	8	18
3-6089-150	150	285	174	22	8	18
3-6089-200	200	340	225	22	8	20

art. 6089/1
FLANGIA ALLUMINIO UNI
Alluminium flange ISO



CODICE/CODE	DN	D1	D2	D3	FORI/HOLES	S
3-6089/1-15	15	95	24	14	4	12
3-6089/1-20	20	105	30	14	4	12
3-6089/1-25	25	115	34	14	4	12
3-6089/1-32	32	140	40	18	4	16
3-6089/1-40	40	150	48	18	4	16
3-6089/1-50	50	165	58	18	4	16
3-6089/1-65	65	185	73	18	4	16
3-6089/1-80	80	200	90	18	8	18
3-6089/1-100	100	220	110	18	8	18
3-6089/1-125	125	250	135	18	8	18
3-6089/1-150	150	285	160	22	8	18
3-6089/1-200	200	340	212	22	8	20

art. 6090/1
FLANGIA CIECA ALLUMINIO UNI EN 1092-1 PN10 EX
UNI 6092
Alluminium flange UNI EN 1092-1 PN10 EX UNI 6092



CODICE / CODE	DN	D1	D3	FORI/HOLES	S
3-6090-15	15	95	14	4	12
3-6090-20	20	105	14	4	12
3-6090-25	25	115	14	4	12
3-6090-32	32	140	18	4	16
3-6090-40	40	150	18	4	16
3-6090-50	50	165	18	4	16
3-6090-65	65	185	18	4	16
3-6090-80	80	200	18	8	18
3-6090-100	100	220	18	8	18
3-6090-125	125	250	18	8	18
3-6090-150	150	285	22	8	18
3-6090-200	200	340	22	8	20

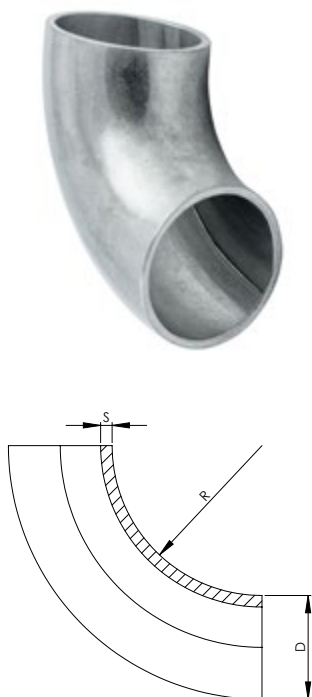
Bends

Curve

Le curve a 90° e a 45° proposte da VLS Components sono in acciaio inox AISI 304 o AISI 316, disponibili nelle versioni elettrounita (anche nella versione lucida a specchio) o senza saldatura. Sono adatte per tubazioni da 17 a 600 mm con spessori di 2 o 3 mm per la versione elettrounita. Spessori variabili invece per la versione senza saldatura.

90° and 45° bends by VLS Components are made of AISI 304 or 316 stainless steel and are available in the electrounited version (glossy or polished version) or without welding. Suitable for pipes ranging from 17 to 600 mm with a thickness of 2 or 3 mm for the electrounited version. Thickness is variable for the version without welding.

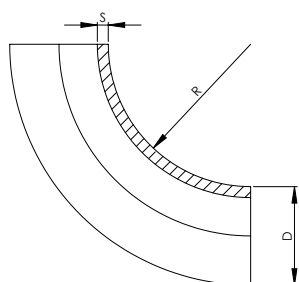
art. 501
CURVA A SALDARE 90°
Welded bend



CODICE / CODE	D	R	S
501-13/15	13,7	20,0	1,5
501-17/15	17,2	28,5	1,5
501-17/20	17,2	28,5	2,0
501-18/15	18,0	35,0	1,5
501-21/15	21,3	31,8	1,5
501-21/20	21,3	31,8	2,0
501-25/15	25,4	38,0	1,5
501-26/15	26,9	28,5	1,5
501-26/20	26,9	28,5	2,0
501-28/15	28,0	42,0	1,5
501-30/20	30,0	33,5	2,0
501-32/20	32,0	48,0	2,0
501-33/15	33,7	38,0	1,5
501-33/20	33,7	38,0	2,0
501-33/25	33,7	38,0	2,5
501-38/15	38,1	57,2	1,5
501-40/15	40,0	60,0	1,5
501-40/20	40,0	60,0	2,0
501-42/15	42,4	47,6	1,5
501-42/20	42,4	47,6	2,0
501-42/25	42,4	47,6	2,5
501-44/20	44,5	51,0	2,0
501-48/15	48,3	57,1	1,5
501-48/20	48,3	57,1	2,0
501-48/25	48,3	57,1	2,5
501-50/15	50,8	76,2	1,5

CODICE / CODE	D	R	S
501-50/20	50,8	76,2	2,0
501-52/15	52,0	70,0	1,5
501-52/20	52,0	70,0	2,0
501-54/20	54,0	68,0	2,0
501-60/15	60,3	76,1	1,5
501-60/20	60,3	76,1	2,0
501-60/30	60,3	76,1	3,0
501-63/15	63,5	95,2	1,5
501-70/20	70,0	92,0	2,0
501-76/20	76,1	96,0	2,0
501-76/30	76,1	96,0	3,0
501-80/20	80,0	120,0	2,0
501-85/20	85,0	90,0	2,0
501-88/20	88,9	114,3	2,0
501-101/20	101,6	133,5	2,0
501-108/20	108,0	142,0	2,0
501-114/20	114,3	152,5	2,0
501-114/30	114,3	152,5	3,0

art. 505
CURVA SENZA SALDATURA 90°
Seamless bend



CODICE / CODE	POLLICI / INCHES	D	R	S	SCHED.
505-21/211	1/2"	21,3	31,8	2,11	10S
505-21/277	1/2"	21,3	31,8	2,77	40S
505-26/211	3/4"	26,9	28,5	2,11	10S
505-26/287	3/4"	26,9	28,5	2,77	40S
505-33/277	1"	33,7	38,0	2,77	10S
505-33/338	1"	33,7	38,0	3,38	40S
505-42/277	1 1/4"	42,4	47,6	2,77	10S
505-42/338	1 1/4"	42,4	47,6	3,38	40S
505-48/277	1 1/2"	48,3	51,7	2,77	10S
505-48/338	1 1/2"	48,3	51,7	3,38	40S
505-60/277	2"	60,3	76,2	2,77	10S
505-60/338	2"	60,3	76,2	3,38	40S
505-73/305	2 1/2"	73,03	95,0	3,05	10S
505-73/516	2 1/2"	73,03	95,0	5,16	40S
505-88/305	3"	88,9	114,5	3,05	10S
505-88/549	3"	88,9	114,5	5,49	40S
505-101/305	3 1/2"	101,6	133,5	3,05	10S
505-101/574	3 1/2"	101,6	133,5	5,74	40S
505-114/305	4"	114,3	152,5	3,05	10S
505-114/602	4"	114,3	152,5	6,02	40S

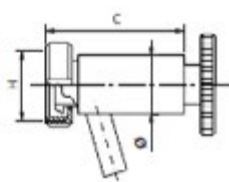
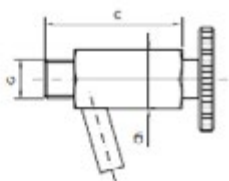
Oenological accessories

Accessori enologici

Gli accessori enologici comprendono: sfere e iniettori di lavaggio, irroratori, assaggiavino, piedini regolabili rientri e gruppi di livello assaggiavino, specole. Tutti gli accessori enologici sono realizzati in acciaio inox AISI 304. Le sfere di lavaggio sono realizzate in acciaio inox AISI 316, possono avere un diametro da 28 a 120 mm con vari tipi di foratura e attacchi filettati a clips. L'irroratore di vinaccia è smontabile, può avere l'attacco garolla o din, ed è disponibile anche nella versione monobraccio. Le specole vengono prodotte nella versione tubolare con attacchi che variano a seconda delle esigenze oppure nella versione piana. I piedini sono disponibili in varie misure da M 10 a M 42 e possono essere realizzati a richiesta della clientela e corredati di relativa ghiera e base di fissaggio.

Oenological accessories include: spray balls and injectors, sprinklers, sampling cocks, adjustable spherical cap base, inferior level and superior level cocks, sight glasses. All oenological accessories are produced in AISI 304 stainless steel. Spray balls are made of AISI 316 stainless steel and their diameter ranges from 28 to 120 mm, with different types of drilling and threaded and clip ends. The pomace nozzle is removable, it can have a garolla or a din nut and liner and is also available in the hand-arm version. Sight glasses have both a tubular version, with connections varying in accordance to requests, and a flat version. Spherical cap bases come in various sizes from M 10 to M42, they can be produced according to our customers' requests and with the correspondent brace and support plate.

ASSAGGIAVINO Sampling cock

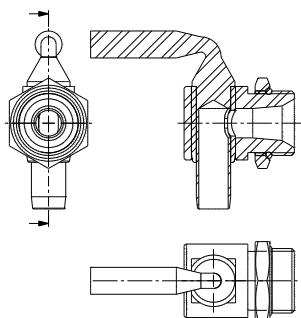
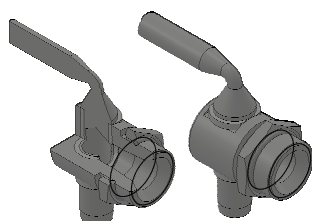


CODICE / CODE

ATTACCO / CONNECTION

4-1002-38	MASCHIO GAS 3/8" / 3/8" BSP MALE
4-1002-12	MASCHIO GAS 1/2" / 1/2" BSP MALE
4-1002-MD15	MASCHIO + GIRELLA DIN 15 / 15 DIN LINER + NUT
4-1002-MD20	MASCHIO + GIRELLA DIN20 / 20 DIN LINER + NUT

74-2115	MASCHIO GAS 3/4" COMPLETO DI CONTRODADO ESAGONALE / 3/4 BSP MALE + EXAGONAL LOCKNUT
----------------	---



Condizioni generali di vendita

Art. 1 CONSEGNA MERCE

Salvo dove diversamente stabilito con il cliente, la spedizione del materiale viene effettuata esclusivamente franco fabbrica, a mezzo corriere indicato dal cliente. Tutti i rischi derivanti dal trasporto sono a carico del committente.

Art. 2 IMPORTO MINIMO DI FATTURAZIONE

Per importi mensili di fatturazione inferiori a Euro 200,00 netti verranno addebitati Euro 15,00 a titolo di rimborso parziale delle nostre spese amministrative.

Art. 3 RECLAMI

La presenza di difetti rilevabili subito attraverso un rapido e sommario esame del prodotto (danneggiamento del prodotto, ammanchi o consegna di prodotto diverso rispetto all'ordine, deve essere comunicata tempestivamente ed in forma scritta alla nostra sede entro il termine di 8 (otto) giorni dal giorno di ricevimento della merce. Eventuali difetti del prodotto rilevabili solo in fase di utilizzo devono essere comunicati in forma scritta alla VLS Components s.r.l. entro il termine di 8 (otto) giorni dalla scoperta del vizio. La resa del materiale deve essere preventivamente autorizzata da VLS Components s.r.l. e la spedizione del reso dovrà essere effettuata in porto franco.

Art. 4 TERMINI DI CONSEGNA

Le date di consegna comunicate non sono tassative. Eventuali ritardi di consegna non danno nessun diritto al committente di annullare l'ordine, né di reclamare danni derivanti dal ritardo stesso. I tempi di consegna per gli ordini urgenti devono essere concordati direttamente con VLS Components s.r.l. che si riserva la facoltà di accettarli. È facoltà di VLS Components s.r.l. non evadere l'ordine e/o evaderlo totalmente o parzialmente, senza che possa essere avanzata alcuna rivalsa o richiesta danni.

Art. 5 IMBALLI E CONFEZIONI

Le spese di imballo sono comprese nel prezzo, fatta eccezione per imballi particolari che verranno addebitati al costo.

Art. 6 PREZZI

Il listino prezzi in vigore annulla il precedente. Nell'eventualità di modifi che al nostro listini prezzi e/o ai prezzi dei singoli articoli, le merci verranno spedite ai prezzi in vigore il giorno della consegna. Il listino prezzi e/o i prezzi dei singoli articoli possono essere variati anche senza preavviso, a seconda delle variazioni delle condizioni di mercato di innovazioni/modifi che tecniche apportate al prodotto. I prezzi si intendono franco nostra Fabbrica. I prezzi sono al netto di IVA.

Art. 7 PAGAMENTI

I pagamenti devono essere effettuati esclusivamente a VLS Components s.r.l. alla condizioni concordate. Non si accettano, in alcun caso, trattenute o arrotondamenti. Nel caso di ritardo di pagamento, rispetto alle condizioni pattuite, VLS Components s.r.l. si riserva il diritto di addebitare gli interessi al tasso corrente, e le spese accessorie, con decorrenza dal giorno successivo a quello convenuto per il pagamento. Gli sconti condizionati al pagamento già accreditati verranno riaddebitati.

Art. 8 GARANZIA

L'esercizio dell'azione di garanzia entro i termini di decadenza e di prescrizione previsti dalla legge comporterà l'unico addebito di Euro 10,00 (diritto fi sso). La non corretta installazione, uso o manutenzione del prodotto farà cadere tale garanzia. Gli articoli dovranno essere resi franco nostra Fabbrica per verifi che ed accettazione. Tutti i dati e le indicazioni tecniche citati nei cataloghi e nel listino in vigore non sono impegnativi e potranno essere modifi cati senza preavviso allo scopo di migliorare qualitativamente i prodotti.

Art. 9 RESPONSABILITA'

VLS Components s.r.l. è esonerata da ogni responsabilità ed obbligazione per incidenti che possono verifi carsi a persone e cose, per o durante l'uso delle attrezzature, per causa e in dipendenza delle medesime.

Art. 10 FORO COMPETENTE

Per qualsiasi contestazione è competente il foro di Bassano del Grappa, Italia.

General sales terms

Art. 1 DELIVERY OF GOODS

Unless otherwise agreed with the customer the goods are only forwarded ex factory, by means of the carrier specified by the customer and, in any case, travel at the customer's risk and hazard.

Art. 2 MINIMUM INVOICE AMOUNT

Invoices for monthly amounts of less than Eur 200,00 (two thousand), Eur 15,00 shall be charged for partial refund or our administrative costs.

Art. 3 COMPLAINTS

Any complaint for shortages, errors or defects, noticed by a first exam of the goods, must be sent in writing to our Head office within 8 days of receiving the goods. Any defects of the product that is possible to notice only by using must be sent in writing to our Head office within 8 days from its discovering.

Art. 4 DELIVERY TERMS

The delivery dates are always approximate. Possible delays in delivery do not give the customer any right to cancel the order or to claim ensuing damages. Urgent cases are subject acceptance by the Firm. The Firm has the right not to execute it fully or partially, without any claims or claims for damage being made towards the Firm.

Art. 5 PACKS AND PACKAGING

Packaging costs are included in the price, excepted for special packing, which shall be charged at cost.

Art. 6 PRICES

The current price list cancels the previous price list. In the event of changes of our price list and/or individual articles, the goods should be forwarded at the price in force on the day of delivery. The price list and/or the prices of individual articles can be changed even without notice, according to the changes in market conditions or technical innovations/modifications made to the product. The prices are understood to be ex our Factory.

Art. 7 PAYMENTS

Payments must be made exclusively to Velo acciai s.r.l. at agreed conditions. Deductions or routing off shall in no case be accepted. In the event of late payment with respect to the agreed conditions, the Firm reserves the right to charge interest at the current rate and additional costs, starting from the day after that agreed on for payment. Discounts subject to payment already credited shall be re-charged.

Art. 8 WARRANTY

The warranty shall cover any defect due to material or manufacture procedure within validity and prescription terms fixed by the law, and, in this case, the only charge shall be of Eur 10,00. The guarantee will lapse in case of incorrect installation, operation or maintenance of the products. The article must be returned free to our Factory for checking and acceptance. All technical information, drawings, illustrations etc. are supplied for guidance only. The company reserves the right to emend any design or specification without prior notice.

Art. 9 RESPONSIBILITY

Velo acciai s.r.l. is relieved of all responsibility and obligations for any accident to persons and things that can occur due to or curing use of the equipment, or caused by and in connection with the equipment.

Art. 10 COMPETENT LOW COURT


These conditions of sales shall be governed by and construed with Italian law, and any disputes shall be settled by the low-court of Bassano del Grappa, Italy.




Passion for steel
since 1985

www.veloacciai.com



 **Velo Acciai s.r.l.** - P.iva 01846600268
Via S. Lorenzo, 42 - 31020
S. Zenone degli Ezzelini (TV) Italia

 Tel: +39 0423968966
Fax: +39 0423968982

 Web: www.veloacciai.com
Email: info@veloacciai.com